



## NHS Expenditure on Agency Staff

Standard Note: SN/SG/4866

Last updated: 8 October 2008

Author: Gavin Thompson, Social & General Statistics

---

This note examines recent trends in expenditure on non-NHS (agency etc.) staff by Strategic Health Authorities (SHA), Primary Care Trusts (PCT) and NHS Trusts, consolidating data from the Public Expenditure on Health and Personal Social Services Questionnaire 2007, and Deposited Papers DEP2008-0633 and DEP2008-0833.

General information regarding trends in NHS workforce groups can be found in Standard Note [SN/SG/2223](#).

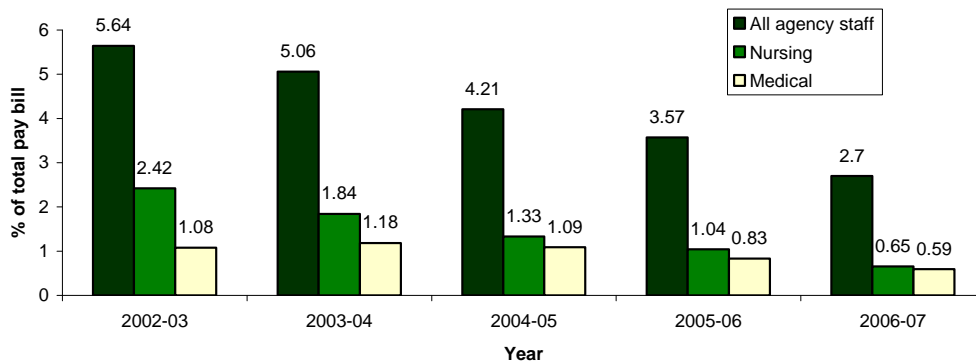
### Contents

A.	Trends in England	2
B.	Trends within NHS Trusts	3
C.	Trends within PCTs	4
D.	Trends within SHAs	5
E.	Appendix tables	6

## A. Trends in England

Chart 1 below shows NHS expenditure across England on agency staff<sup>1</sup> as a proportion of the total NHS pay bill. Nursing and medical staff, which respectively constitute the top two sources of agency expenditure, are dealt with specifically.

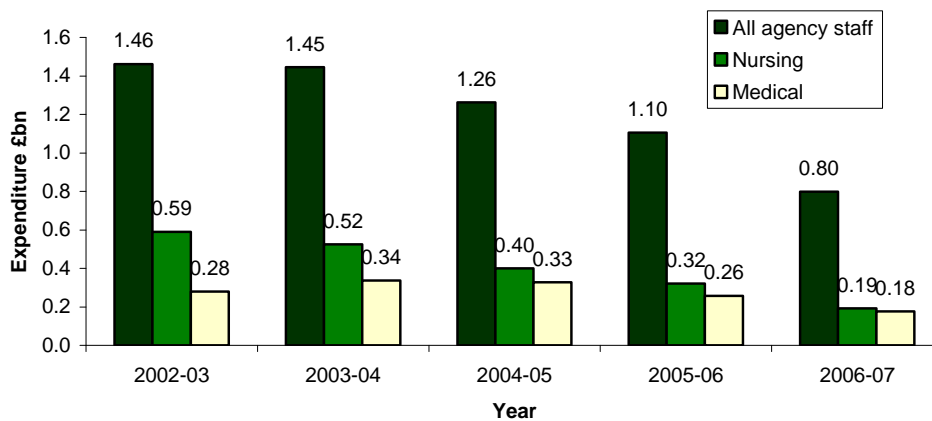
**Chart 1: Expenditure on agency staff as a percentage of total NHS pay bill, England 2002-07**



The proportion of the total NHS pay bill accounted for by agency staff has fallen consecutively since 2002-03. This trend also holds within nursing and medical staff groups.

Chart 2 shows total expenditure on agency staff over the same period.

**Chart 2: Expenditure on agency staff, England 2002-07**



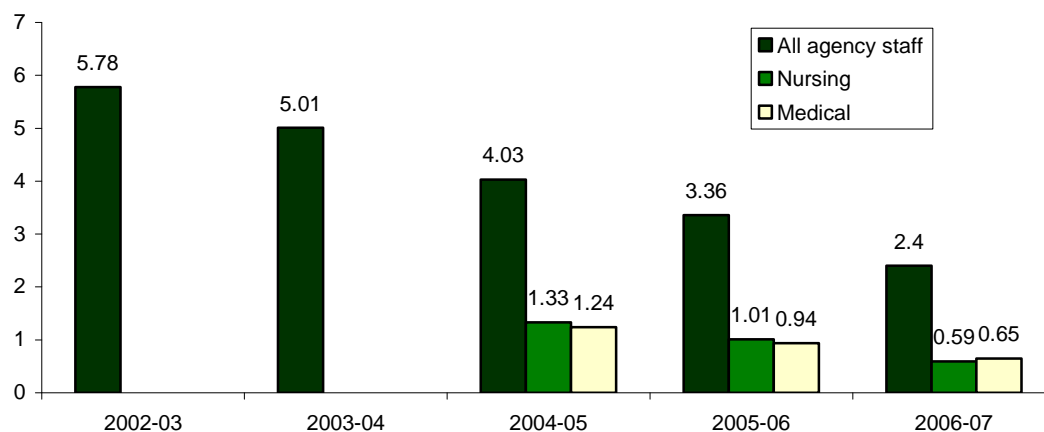
A similar trend is in evidence: in England, expenditure by the NHS on nursing, medical and agency staff as a whole has been falling year-on-year since 2002-03.

<sup>1</sup> Here, the term 'agency staff' refers to any employees working for the NHS but not paid directly by it. In many publications, such staff are referred to as 'non-NHS staff (agency, etc.)'

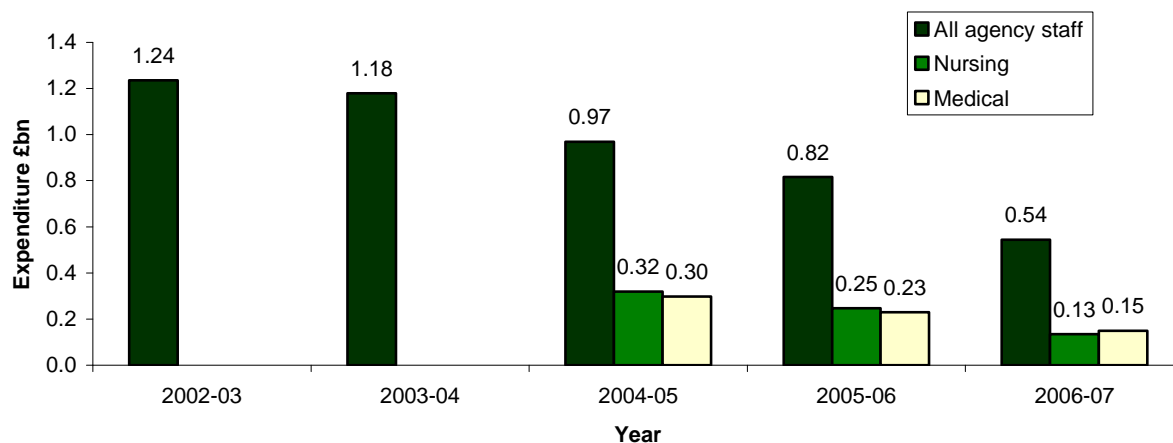
## B. Trends within NHS Trusts

The charts below show expenditure on non-NHS (agency) staff by NHS Trusts as a proportion of their total pay bill (Chart 3), and in absolute terms (Chart 4)<sup>2</sup>.

**Chart 3: Expenditure by NHS Trusts on agency staff, as a percentage of their total pay bill, 2002-07**



**Chart 4: Expenditure on agency staff by NHS Trusts, 2002-07**



Expenditure on agency staff has declined rapidly amongst NHS Trusts, both as a proportion of their total pay bill and in absolute terms. In particular, expenditure on agency nurses almost halved between 2005-06 and 2006-07.

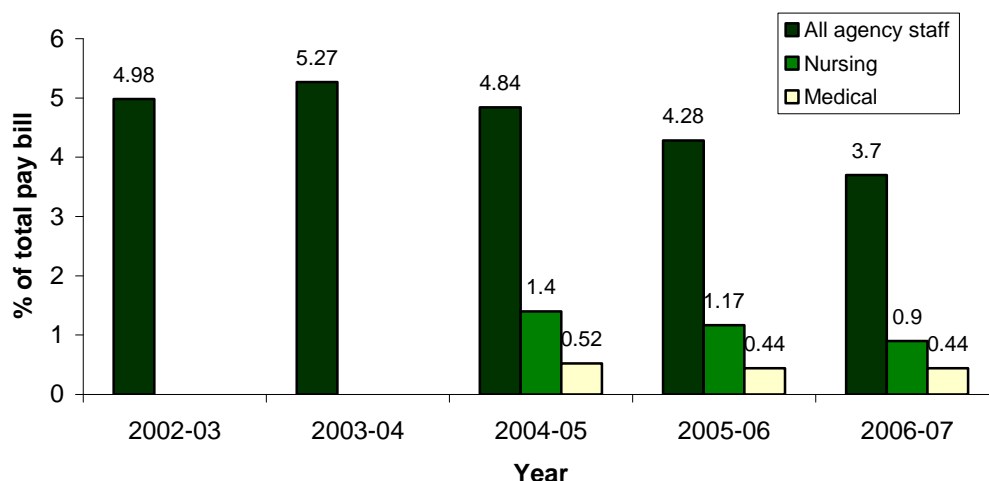
Information on agency staff expenditure by individual NHS Trusts can be found in Table 1 of the appendix.

<sup>2</sup> Charts 3, 4, 5 and 6 do not deal specifically with agency nursing and medical staff expenditure for 2002-03 or 2003-04, as data is not readily available for these periods.

### C. Trends within PCTs

Chart 5 below shows expenditure by PCTs in England on agency staff as a proportion of their total pay bill.

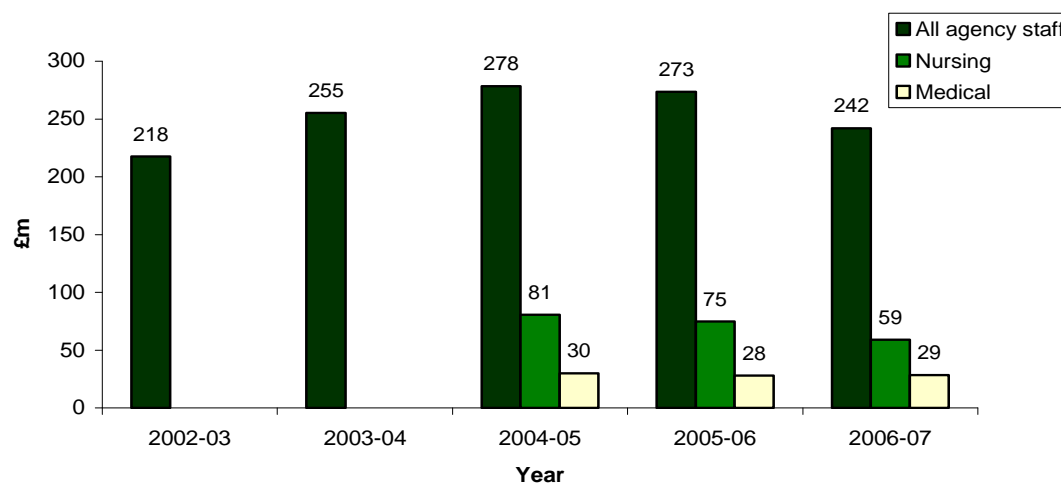
**Chart 5: Expenditure by PCTs on agency staff as a proportion of their total pay bill, 2002-07**



Expenditure on agency staff as a proportion of their pay bills has declined amongst PCTs since 2003-04, but more gradually than amongst NHS Trusts. In addition, the proportion of PCT pay bills accounted for by agency medical staff has not changed significantly since 2004-05.

Chart 6 shows total expenditure by PCTs on agency staff.

**Chart 6: Expenditure by PCTs on agency staff, England 2002-07**



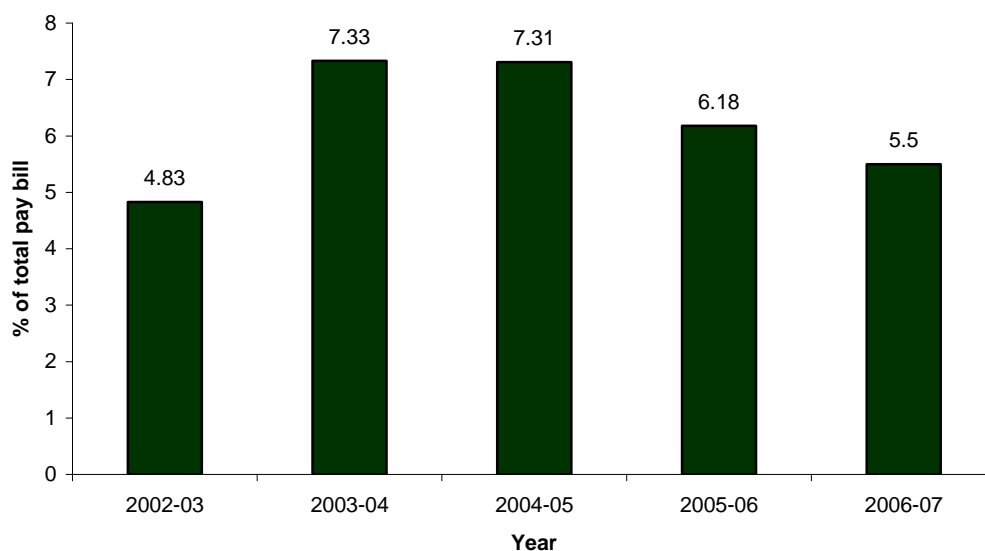
In total, NHS trusts spent £544.01m on agency staff in 2006-07, whilst PCTs spent £241.94m. This disparity has narrowed over time, as NHS Trusts have made more significant reductions in agency expenditure. For instance in 2004-05, NHS Trusts spent £968.82m on agency workers, compared with £278.36m amongst PCTs.

Information on agency staff expenditure by individual PCTs can be found in Table 2 of the appendix.

## D. Trends within SHAs

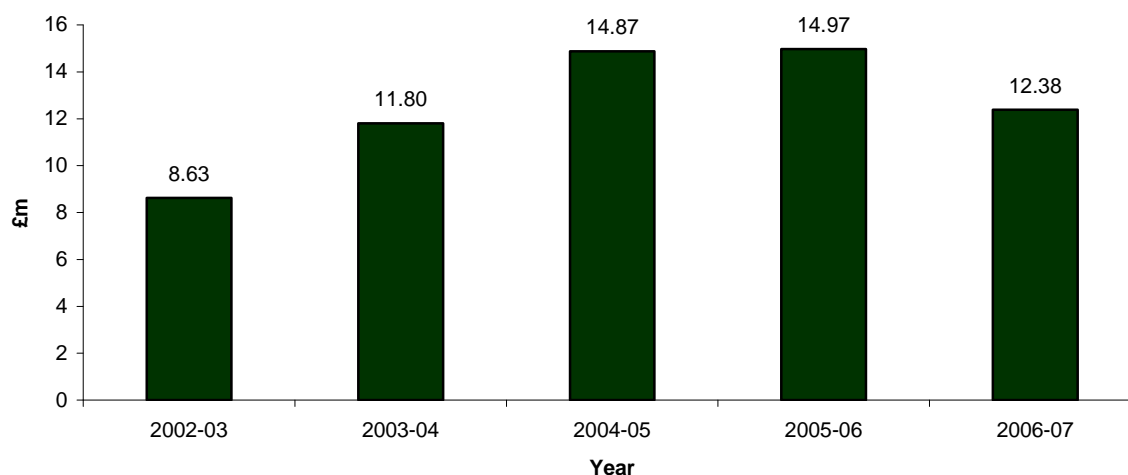
Charts 7 and 8 show expenditure on agency staff amongst SHAs

**Chart 7: Expenditure by SHAs on agency staff as a proportion of their total pay bill, England 2002-07**



Following the trend of PCTs and NHS Trusts, SHAs have cut back their expenditure on agency staff, both as a proportion of total payroll costs, and in absolute terms.

**Chart 8: Expenditure by SHAs on agency staff, England 2002-07**



The pay bill of SHAs is considerably lower than PCTs and NHS Trusts, hence their expenditure on agency staff is much smaller. However, as a proportion of their pay bill, SHAs have spent the most on agency staff out of the three administrative units since 2003-04.

Information on agency staff expenditure by individual SHAs can be found in Table 3 of the appendix.

## E. Appendix tables

Table 1 below ranks 210 NHS Trusts according to the proportion of their individual pay bill used in employing agency staff. Rank 1 is assigned to the trust which used the largest proportion of their wage bill in employing non-NHS staff (South-West London Mental Health NHS Trust, 13%) and rank 210 to the lowest proportion (West Midlands Ambulance Service NHS Trust, 0.2).

20.3% of Yorkshire and the Humber SHA's pay bill (£6.78m) is accounted for by non-NHS staff, whilst North East SHA spends £122,000, or 1.2% of its total pay bill, on agency staff.

**Table1: Expenditure on agency staff amongst NHS Trusts**

<b>NHS Trust</b>	<b>Total agency salaries and wages (£000s)</b>	<b>Total revenues expenditure on staff and wages (£000s)</b>	<b>Expenditure on agency staff as a percentage of total paybill</b>	<b>Rank</b>
SW LONDON MENTAL HLTH NHS TRUST	14,728	113,448	13.0%	1
N ESSEX MENTAL HEALTH PARTNERSHIP NHS TRUST	8,457	72,109	11.7%	2
NORTH EAST LONDON MENTAL HEALTH NHS TRUST	8,384	74,408	11.3%	3
SOUTH LONDON AND MAUDSLEY NHS FOUNDATION TRUST	11,696	127,899	9.1%	4
SOMERSET PARTNERSHIP NHS AND SOC CARE NHS TRUST	2,445	37,032	6.6%	5
SUSSEX PARTNERSHIP NHS TRUST	9,139	138,602	6.6%	6
SURREY AND BORDERS PARTNERSHIP NHS TRUST	7,925	123,653	6.4%	7
CENTRAL AND NORTH WEST LONDON MH NHS TRUST	8,158	136,206	6.0%	8
WESTON AREA HEALTH NHS TRUST	2,986	52,146	5.7%	9
CENT MANCHESTER/ MANCHESTER CHILD NHS TRUST	16,189	290,867	5.6%	10
LANCASHIRE CARE NHS TRUST	5,961	111,518	5.3%	11
PENNINE CARE NHS TRUST	4,015	75,672	5.3%	12
SOUTH DOWNS HEALTH NHS TRUST	2,349	44,869	5.2%	13
MANCHESTER HEALTH AND SOCIAL CARE NHS TRUST	2,851	57,489	5.0%	14
BIRMINGHAM AND SOLIHULL MENTAL HEALTH NHSTRUST	6,774	139,947	4.8%	15
PORTSMOUTH HOSPITALS NHS TRUST	9,593	206,416	4.6%	16
DORSET HEALTH CARE NHS TRUST	2,434	52,824	4.6%	17
GREAT ORMOND STREET HOSPITAL NHS TRUST	6,138	146,308	4.2%	18
BOLTON, SALFORD AND TRAFFORD MENTAL HEALTH NHS TRUST	3,640	87,389	4.2%	19
OXFORD RADCLIFFE HOSPITAL NHS TRUST	12,385	298,406	4.2%	20
ST MARY'S NHS TRUST	6,873	167,886	4.1%	21
SURREY AND SUSSEX HEALTHCARE NHS TRUST	4,314	106,283	4.1%	22
WALSALL HOSPITALS NHS TRUST	3,880	97,614	4.0%	23
ROYAL BERKSHIRE HOSPITAL NHS FOUNDATION TRUST	913	23,098	4.0%	24
BERKSHIRE HEALTHCARE NHS TRUST	1,939	49,520	3.9%	25
PLYMOUTH HOSPITALS NHS TRUST	7,566	196,053	3.9%	26
WEST LONDON MENTAL HEALTH NHS TRUST	6,390	166,309	3.8%	27

EALING HOSPITAL NHS TRUST	2,636	69,610	3.8%	28
JAMES PAGET UNIVERSITY HOSPITALS NHS FOUNDATION TRUST	1,135	30,310	3.7%	29
BRADFORD DISTRICT CARE NHS TRUST	2,713	74,118	3.7%	30
TAVISTOCK AND PORTMAN NHS FOUNDATION TRUST	394	10,835	3.6%	31
COVENTRY AND WARWICKSHIRE PARTNERSHIP NHS TRUST	1,779	49,203	3.6%	32
WEST HERTFORDSHIRE HOSPITALS NHS TRUST	5,133	142,112	3.6%	33
BARKING, HAVERING AND REDBRIDGE HOSP NHS TRUST	8,850	245,946	3.6%	34
WHITTINGTON HOSPITAL NHS TRUST	3,424	95,675	3.6%	35
HEATHERWOOD AND WEXHAM PARK HOSPS NHS TRUST	4,328	121,657	3.6%	36
BEDFORDSHIRE AND LUTON MH AND SOCIAL CARE NHS TRUST	2,171	61,872	3.5%	37
GREAT WESTERN AMBULANCE SERVICE NHS TRUST	1,521	43,550	3.5%	38
CHESHIRE AND WIRRAL PARTNERSHIP NHS TRUST	2,899	83,411	3.5%	39
ROYAL FREE HAMPSTEAD NHS TRUST	7,357	212,905	3.5%	40
5 BOROUGH PARTNERSHIP NHS TRUST	2,451	71,316	3.4%	41
BUCKINGHAMSHIRE HOSPITALS NHS TRUST	5,181	154,803	3.3%	42
HAMMERSMITH HOSPITALS NHS TRUST	9,148	273,467	3.3%	43
NOTTINGHAMSHIRE HEALTHCARE NHS TRUST	6,282	190,755	3.3%	44
BARNET, ENFIELD AND HARINGEY MH NHS TRUST	3,588	109,892	3.3%	45
THE ROYAL NAT ORTHOPAEDIC HOSP NHS TRUST	1,333	41,172	3.2%	46
THE LEWISHAM HOSPITAL NHS TRUST	3,338	103,750	3.2%	47
DERBYSHIRE MENTAL HEALTH SERVICES NHS TRUST	2,233	69,531	3.2%	48
NEWHAM UNIVERSITY HOSPITAL NHS TRUST	2,731	85,672	3.2%	49
WEST MIDDLESEX UNIVERSITY NHS TRUST	2,272	73,005	3.1%	50
UNIVERSITY HOSPITAL OF S.MANCHESTER FOUNDATION TRUST	2,767	90,582	3.1%	51
EAST OF ENGLAND AMBULANCE SERVICE NHS TRUST	3,971	131,632	3.0%	52
SOUTH WEST YORKSHIRE MENTAL HEALTH NHS TRUST	2,223	74,778	3.0%	53
LEEDS MENTAL HEALTH TEACHING NHS TRUST	2,211	74,780	3.0%	54
SOUTH WARWICKSHIRE GEN HOSPS NHS TRUST	1,865	64,376	2.9%	55
ST GEORGE'S HEALTHCARE NHS TRUST	7,085	245,084	2.9%	56
SOUTH ESSEX PARTNERSHIP NHS FOUNDATION TRUST	155	5,451	2.8%	57
LEICESTERSHIRE PARTNERSHIP NHS TRUST	2,804	98,948	2.8%	58
MERSEY CARE NHS TRUST	4,114	145,357	2.8%	59
NTH CUMBRIA MH AND LEARNING DISAB NHS TRUST	998	35,294	2.8%	60
WORTHING AND SOUTHLANDS HOSPITALS NHS TRUST	2,726	97,301	2.8%	61
BROMLEY HOSPITALS NHS TRUST	2,889	103,293	2.8%	62
ROYAL BROMPTON AND HAREFIELD NHS TRUST	3,439	123,878	2.8%	63

WEST DORSET GENERAL HOSPITALS NHS TRUST	2,114	76,219	2.8%	64
WORCESTERSHIRE ACUTE HOSPITALS NHS TRUST	4,181	156,142	2.7%	65
CAMBS & PETERBOROUGH MH PARTNERSHIP NHS TRUST	2,356	88,188	2.7%	66
CLATTERBRIDGE CENTRE FOR ONCOLOGY NHS FOUNDATION TRUST	191	7,179	2.7%	67
KING'S COLLEGE HOSPITAL NHS FOUNDATION TRUST	4,422	166,297	2.7%	68
WORCESTERSHIRE MH PARTNERSHIP NHS TRUST	1,110	42,407	2.6%	69
CHRISTIE HOSPITAL NHS TRUST	1,545	59,676	2.6%	70
MID YORKSHIRE HOSPITALS NHS TRUST	5,521	215,333	2.6%	71
SOUTHAMPTON UNIVERSITY HOSPS NHS TRUST	6,251	243,879	2.6%	72
NORTH MIDDLESEX UNIVERSITY HOSP NHS TRUST	2,114	83,178	2.5%	73
CHELSEA AND WESTMINSTER HOSPITAL NHS FOUNDATION TRUST	1,594	62,724	2.5%	74
PRINCESS ALEXANDRA HOSPITAL NHS TRUST	2,207	86,933	2.5%	75
GLOUCESTERSHIRE PARTNERSHIP NHS TRUST	1,308	51,691	2.5%	76
WINCHESTER AND EASTLEIGH HLTHCRE NHS TRUST	2,160	85,404	2.5%	77
SOUTHEND UNIVERSITY HOSPITALS NHS FOUNDATION TRUST	539	21,326	2.5%	78
THE HILLINGDON HOSPITAL NHS TRUST	2,428	96,196	2.5%	79
NORTHUMBERLAND, TYNE AND WEAR NHS TRUST	5,269	209,984	2.5%	80
GOOD HOPE HOSPITAL NHS TRUST	2,103	84,970	2.5%	81
TRAFFORD HEALTHCARE NHS TRUST	1,506	61,050	2.5%	82
EAST CHESHIRE NHS TRUST	1,614	65,719	2.5%	83
MID ESSEX HOSPITAL SERVICES NHS TRUST	2,754	113,241	2.4%	84
ROYAL SURREY COUNTY HOSPITAL NHS TRUST	2,248	94,161	2.4%	85
HAMPSHIRE PARTNERSHIP NHS TRUST	3,015	126,462	2.4%	86
SHEFFIELD CARE NHS TRUST	1,978	83,063	2.4%	87
THE MID CHESHIRE HOSPITALS NHS TRUST	2,059	87,582	2.4%	88
EAST LANCASHIRE HOSPITALS NHS TRUST	4,396	187,935	2.3%	89
SALISBURY NHS FOUNDATION TRUST	361	15,459	2.3%	90
NUFFIELD ORTHOPAEDIC NHS TRUST	724	31,065	2.3%	91
DEVON PARTNERSHIP NHS TRUST	1,712	73,515	2.3%	92
OXFORD LEARNING DISABILITY NHS TRUST	664	29,231	2.3%	93
SHEFFIELD CHILDREN'S NHS FOUNDATION TRUST	419	18,657	2.2%	94
CORNWALL PARTNERSHIP NHS TRUST	1,399	62,438	2.2%	95
EPSOM AND ST HELIER UNIVERSITY HOSPITALS NHS TRUST	3,946	176,700	2.2%	96
PENNINE ACUTE HOSPITALS NHS TRUST	6,948	312,606	2.2%	97
ROYAL ORTHOPAEDIC HOSPITAL NHS FOUNDATION TRUST	505	22,732	2.2%	98
GEORGE ELIOT HOSPITAL NHS TRUST	1,326	60,081	2.2%	99
KINGSTON HOSPITAL NHS TRUST	2,369	107,494	2.2%	100
MAIDSTONE & TUNBRIDGE WELLS CALDERSTONES NHS TRUST	3,403	155,272	2.2%	101
CALDERSTONES NHS TRUST	793	36,207	2.2%	102
AVON AND WILTSHIRE MHP NHS TRUST	2,704	124,075	2.2%	103
BOLTON HOSPITALS NHS TRUST	2,344	109,503	2.1%	104



BIRMINGHAM CHILDREN'S HOSPITAL NHS FOUNDATION TRUST	1,729	81,569	2.1%	105
TAMESIDE AND GLOSSOP ACUTE SERVS NHS TRUST	1,582	75,368	2.1%	106
BRIGHTON AND SUSSEX UNIV HOSPS NHS TRUST	4,106	197,510	2.1%	107
SWINDON AND MARLBOROUGH NHS TRUST	1,856	91,815	2.0%	108
OXLEAS NHS FOUNDATION TRUST	132	6,562	2.0%	109
HUMBER MENTAL HEALTH TEACHING NHS TRUST	1,061	54,617	1.9%	110
MILTON KEYNES GENERAL HOSPITAL NHS TRUST	1,468	77,204	1.9%	111
NORTH WEST LONDON HOSPITALS NHS TRUST	3,518	185,219	1.9%	112
DONCASTER AND SOUTH HUMBER HLTHCARE NHS TRUST	1,212	63,923	1.9%	113
HERTFORDSHIRE PARTNERSHIP NHS TRUST	2,039	107,555	1.9%	114
WHIPPS CROSS UNIVERSITY HOSP NHS TRUST	2,259	121,681	1.9%	115
ST HELENS AND KNOWSLEY HOSPITALS NHS TRUST	2,311	125,439	1.8%	116
CAMDEN AND ISLINGTON MENTAL HEALTH SOCIAL CARE NHS TRUST	1,476	81,506	1.8%	117
LONDON AMBULANCE SERVICE NHS TRUST	2,925	161,539	1.8%	118
NORTH LINCOLNSHIRE AND GOOLE HOSPS NHS TRUST	2,829	156,651	1.8%	119
ASHFORD AND ST PETER'S HOSPITALS NHS TRUST	2,032	113,955	1.8%	120
EAST LONDON AND THE CITY MH NHS TRUST	1,816	103,152	1.8%	121
NORTH STAFFS COMBINED HC NHS TRUST	1,138	65,960	1.7%	122
OXFORDSHIRE AND BUCKINGHAMSHIRE MH PARTNERSHIP NHS TRUST	1,519	88,216	1.7%	123
NORTHERN DEVON HEALTHCARE NHS TRUST	1,138	66,232	1.7%	124
SUFFOLK MH PARTNERSHIP NHS TRUST	1,032	60,523	1.7%	125
DUDLEY GROUP OF HOSPITALS NHS TRUST	1,820	107,685	1.7%	126
NORTH CHESHIRE HOSPITALS NHS TRUST	1,957	116,460	1.7%	127
WALTON NEUROLOGY CENTRE NHS TRUST	435	25,969	1.7%	128
NOTTINGHAM UNIVERSITY HOSPITALS NHS TRUST	6,202	371,803	1.7%	129
ROYAL UNITED HOSPITAL BATH NHS TRUST	1,895	114,494	1.7%	130
BARTS AND THE LONDON NHS TRUST	5,040	305,565	1.6%	131
EAST AND NORTH HERTFORDSHIRE NHS TRUST	2,846	173,837	1.6%	132
UNIVERSITY HOSPITAL OF NORTH STAFFORDSHIRE HOSPITAL NHS TRUST	3,415	210,383	1.6%	133
POOLE HOSPITALS NHS TRUST	1,663	103,240	1.6%	134
THE CARDIOTHORACIC CNTR - LIVERPOOL NHS TRUST	694	43,442	1.6%	135
WRIGHTINGTON, WIGAN AND LEIGH NHS TRUST	2,037	127,689	1.6%	136
THE ROYAL WEST SUSSEX NHS TRUST	1,129	75,019	1.5%	137
NORTH BRISTOL NHS TRUST	3,823	254,387	1.5%	138
QUEEN MARY'S SIDCUP NHS TRUST	975	67,328	1.4%	139
MEDWAY NHS TRUST	1,549	108,837	1.4%	140
BARNET AND CHASE FARM HOSPITALS NHS TRUST	2,312	164,566	1.4%	141
MAYDAY HEALTHCARE NHS TRUST	1,563	112,830	1.4%	142
NORTH CUMBRIA ACUTE HOSPITALS NHS	1,586	114,622	1.4%	143

TRUST				
ESSEX RIVERS HEALTHCARE NHS TRUST	1,373	101,347	1.4%	144
QUEEN ELIZABETH HOSPITAL NHS TRUST	1,238	92,349	1.3%	145
NORFOLK AND WAVENEY MH PARTNERSHIP NHS TRUST	930	69,933	1.3%	146
HEREFORD HOSPITALS NHS TRUST	717	53,972	1.3%	147
LINCOLNSHIRE PARTNERSHIP NHS TRUST	778	58,886	1.3%	148
HULL AND EAST YORKSHIRE HOSPITALS NHS TRUST	3,000	228,425	1.3%	149
UNIVERSITY HOSPITALS OF LEICESTER NHS TRUST	4,919	374,872	1.3%	150
BIRMINGHAM WOMEN'S H'CARE NHS TRUST	612	46,944	1.3%	151
SOUTH WEST AMBULANCE SERVICE NHS TRUST	941	72,719	1.3%	152
SANDWELL & WEST BIRMINGHAM HOSPS NHS TRUST	2,832	220,244	1.3%	153
UNITED LINCOLNSHIRE HOSPITALS NHS TRUST	2,599	205,119	1.3%	154
NORTHAMPTONSHIRE HEALTHCARE NHS TRUST	853	68,035	1.3%	155
SOUTHPORT AND ORMSKIRK HOSPITAL NHS TRUST	1,080	87,310	1.2%	156
UNIV HOSPS COVENTRY & WARWICKSHIRE NHS TRUST	2,563	210,537	1.2%	157
TEES, ESK AND WEAR VALLEYS NHS TRUST	1,839	151,462	1.2%	158
ROYAL LIVERPOOL CHILDRENS NHS TRUST	1,127	93,589	1.2%	159
NORTHAMPTON GENERAL HOSPITAL NHS TRUST	1,361	117,318	1.2%	160
SOUTH STAFFORDSHIRE HEALTHCARE NHS FOUNDATION TRUST	63	5,457	1.2%	161
BASINGSTOKE AND NORTH HAMPSHIRE HOSPITALS NHS FOUNDATION TRUST	586	51,892	1.1%	162
TAUNTON AND SOMERSET NHS TRUST	1,204	107,283	1.1%	163
SALFORD ROYAL NHS FOUNDATION TRUST	512	46,296	1.1%	164
CALDERDALE AND HUDDERSFIELD NHS FOUNDATION TRUST	596	53,973	1.1%	165
MID STAFFORDSHIRE GEN HOSPITALS NHS TRUST	857	78,120	1.1%	166
YEOVIL DISTRICT HOSPITAL NHS FOUNDATION TRUST	93	8,535	1.1%	167
SHERWOOD FOREST HOSPITALS NHS FOUNDATION TRUST	1,003	95,782	1.0%	168
BURTON HOSPITALS NHS TRUST	786	75,520	1.0%	169
SANDWELL MH SOCIAL CARE NHS TRUST	336	32,899	1.0%	170
KETTERING GENERAL HOSPITAL NHS TRUST	919	91,377	1.0%	171
SCARBOROUGH AND NE YORKS NHS TRUST	664	67,556	1.0%	172
BLACKPOOL, FYLDE AND WYRE HOSPS NHS TRUST	1,256	129,365	1.0%	173
WIRRAL HOSPITAL NHS TRUST	1,576	163,529	1.0%	174
KENT AND MEDWAY NHS & SC PARTNERSHIP NHS TRUST	1,235	129,701	1.0%	175
AINTREE UNIVERSITY HOSPITALS NHS FOUNDATION TRUST	423	44,664	0.9%	176
BEDFORD HOSPITALS NHS TRUST	711	75,421	0.9%	177
COUNTY DURHAM AND DARLINGTON NHS FOUNDATION TRUST	1,393	148,856	0.9%	178
ROYAL LIVERPOOL BROADGREEN HOSPS NHS TRUST	1,720	185,661	0.9%	179
UNITED BRISTOL HEALTHCARE NHS TRUST	2,182	238,447	0.9%	180

YORKSHIRE AMBULANCE SERVICE NHS TRUST	977	108,513	0.9%	181
ROYAL CORNWALL HOSPITALS NHS TRUST	1,366	155,159	0.9%	182
EAST KENT HOSPITALS NHS TRUST	1,980	225,267	0.9%	183
UNIVERSITY HOSPITALS OF MORECAMBE BAY NHS TRUST	1,252	142,531	0.9%	184
STAFFORDSHIRE AMBULANCE SERVICE NHS TRUST	185	21,248	0.9%	185
NORTH EAST AMBULANCE SERVICE NHS TRUST	431	49,972	0.9%	186
EAST SUSSEX HOSPITALS NHS TRUST	1,357	159,659	0.8%	187
WEST SUFFOLK HOSPITALS NHS TRUST	634	78,312	0.8%	188
SHREWSBURY AND TELFORD HOSPITAL NHS TRUST	1,111	137,599	0.8%	189
YORK HOSPITALS NHS TRUST	928	122,722	0.8%	190
ROB JONES AND A HUNT ORTHOPAEDIC NHS TRUST	261	34,704	0.8%	191
QUEEN ELIZABETH HOSPITAL KINGS LYNN NHS TRUST	520	73,644	0.7%	192
NORTH TEES AND HARTLEPOOL NHS TRUST	851	124,878	0.7%	193
SOUTH CENTRAL AMBULANCE SERVICE NHS TRUST	459	67,830	0.7%	194
SOUTH DEVON HEALTHCARE NHS FOUNDATION TRUST	671	100,822	0.7%	195
NEWCASTLE UPON TYNE HOSPITALS NHS FOUNDATION TRUST	376	58,281	0.6%	196
SOUTH TEES HOSPITALS NHS TRUST	1,374	215,832	0.6%	197
NORTH WEST AMBULANCE SERVICE NHS TRUST	886	139,818	0.6%	198
HINCHINGBROOKE HEALTH CARE NHS TRUST	311	50,665	0.6%	199
AIREDALE NHS TRUST	413	68,996	0.6%	200
LEEDS TEACHING HOSPITALS NHS TRUST	2,711	485,901	0.6%	201
NORTHUMBRIA HEALTHCARE NHS FOUNDATION TRUST	300	57,085	0.5%	202
ROYAL WOLVERHAMPTON HOSPITAL NHS TRUST	758	147,172	0.5%	203
SOUTH EAST COAST AMBULANCE SERVICE NHS TRUST	429	88,762	0.5%	204
LUTON AND DUNSTABLE HOSPITAL NHS FOUNDATION TRUST	134	33,048	0.4%	205
DARTFORD AND GRAVESHAM NHS TRUST	251	64,528	0.4%	206
IPSWICH HOSPITAL NHS TRUST	353	116,052	0.3%	207
NORFOLK AND NORWICH UNI HOSP NHS TRUST	541	181,757	0.3%	208
EAST MIDLANDS AMBULANCE SERVICE NHS TRUST	222	89,506	0.2%	209
WEST MIDLANDS AMBULANCE SERVICE NHS TRUST	108	79,784	0.1%	210
<b>NHS Trusts - Totals</b>	<b>544,012</b>	<b>23,139,060</b>	<b>2.4%</b>	<b>-</b>

The table below shows rankings for the 151 PCTs in England. Again, the variation is considerable: 15.5% (£5.35m) of City and Hackney PCT's pay bill is spent employing non-NHS staff; meanwhile, at the end of the rankings, Cornwall and Isles of Scilly PCT spends £92,000, or 0.2%.

**Table 2: Expenditure on agency staff amongst PCTs**

<b>Primary Care Trusts</b>	<b>Total agency staff Salaries &amp; Wages (£000s)</b>	<b>Total Revenue Expenditure on Salaries &amp; Wages (£000s)</b>	<b>Expenditure on agency staff as a percentage of total paybill</b>	<b>Rank</b>
CITY AND HACKNEY TEACHING PCT	5,345	34,376	15.5%	1
EALING PCT	5,888	40,895	14.4%	2
SOUTH WEST ESSEX PCT	4,537	43,966	10.3%	3
SOUTHWARK PCT	3,763	37,400	10.1%	4
SHEFFIELD PCT	5,832	59,988	9.7%	5
MILTON KEYNES PCT	3,519	37,534	9.4%	6
TORBAY CARE PCT	2,919	31,301	9.3%	7
HAVERING PCT	2,959	32,397	9.1%	8
SOUTH GLOUCESTERSHIRE PCT	1,250	13,790	9.1%	9
CAMDEN PCT	4,448	51,594	8.6%	10
HOUNSLOW PCT	1,798	21,604	8.3%	11
ENFIELD PCT	2,923	35,912	8.1%	12
WALTHAM FOREST PCT	2,030	25,526	8.0%	13
BIRMINGHAM EAST AND NORTH PCT	2,943	38,708	7.6%	14
TOWER HAMLETS PCT	4,510	61,147	7.4%	15
CROYDON PCT	2,404	33,738	7.1%	16
REDBRIDGE PCT	1,514	21,403	7.1%	17
COVENTRY TEACHING PCT	3,686	52,197	7.1%	18
LAMBETH PCT	2,465	35,316	7.0%	19
BOLTON PCT	2,794	40,068	7.0%	20
WEST SUSSEX PCT	6,243	90,272	6.9%	21
BARKING AND DAGENHAM PCT	1,379	20,328	6.8%	22
GREENWICH TEACHING PCT	1,864	28,940	6.4%	23
OXFORDSHIRE PCT	3,539	55,424	6.4%	24
OLDHAM PCT	1,702	26,969	6.3%	25
HAMMERSMITH AND FULHAM PCT	1,581	25,552	6.2%	26
BRENT TEACHING PCT	2,384	41,311	5.8%	27
HARINGEY TEACHING PCT	1,830	31,745	5.8%	28
KENSINGTON AND CHELSEA PCT	1,838	32,280	5.7%	29
NORFOLK PCT	5,691	101,834	5.6%	30
BLACKBURN WITH DARWEN PCT	1,038	20,165	5.1%	31
SUTTON AND MERTON PCT	2,463	49,479	5.0%	32
NORTH EAST ESSEX PCT	2,255	45,492	5.0%	33
HEREFORDSHIRE PCT	1,875	37,993	4.9%	34
ISLINGTON PCT	1,842	37,400	4.9%	35
SURREY PCT	6,147	126,073	4.9%	36
NOTTINGHAMSHIRE COUNTY PCT	3,784	77,857	4.9%	37
HILLINGDON PCT	1,128	23,722	4.8%	38

Standard Notes are compiled for the benefit of Members of Parliament and their personal staff. Authors are available to discuss the contents of these papers with Members and their staff but cannot advise others.

WEST ESSEX PCT	1,402	30,571	4.6%	39
SOUTH EAST ESSEX PCT	1,226	26,937	4.6%	40
NORTH EAST LINCOLNSHIRE PCT	1,020	22,522	4.5%	41
ROTHERHAM PCT	1,771	39,128	4.5%	42
LIVERPOOL PCT	3,682	83,510	4.4%	43
NOTTINGHAM CITY PCT	1,355	31,001	4.4%	44
WARWICKSHIRE PCT	4,072	93,282	4.4%	45
CENTRAL LANCASHIRE PCT	2,705	63,328	4.3%	46
BLACKPOOL PCT	692	16,214	4.3%	47
HULL PCT	1,528	35,850	4.3%	48
SALFORD PCT	1,882	44,857	4.2%	49
TELFORD AND WREKIN PCT	870	21,033	4.1%	50
KINGSTON PCT	889	22,032	4.0%	51
NORTHUMBERLAND CARE PCT	1,870	47,009	4.0%	52
WESTMINSTER PCT	1,422	35,917	4.0%	53
LEWISHAM PCT	1,680	42,780	3.9%	54
HEART OF BIRMINGHAM TEACHING PCT	1,506	39,435	3.8%	55
BATH AND NORTH EAST SOMERSET PCT	1,006	26,612	3.8%	56
RICHMOND AND TWICKENHAM PCT	752	19,938	3.8%	57
WANDSWORTH PCT	1,866	50,000	3.7%	58
TAMESIDE AND GLOSSOP PCT	998	27,022	3.7%	59
SHROPSHIRE COUNTY PCT	2,255	61,131	3.7%	60
MANCHESTER PCT	2,779	75,831	3.7%	61
SOUTH TYNESIDE PCT	680	18,632	3.6%	62
BURY PCT	729	20,752	3.5%	63
BARNLEY PCT	1,873	53,363	3.5%	64
WEST HERTFORDSHIRE PCT	1,540	44,252	3.5%	65
BARNET PCT	1,486	43,321	3.4%	66
PORTSMOUTH CITY TEACHING PCT	1,817	53,770	3.4%	67
EAST SUSSEX DOWNS AND WEALD PCT	1,332	40,227	3.3%	68
KNOWSLEY PCT	959	29,003	3.3%	69
SWINDON PCT	725	22,016	3.3%	70
BRIGHTON AND HOVE CITY PCT	238	7,273	3.3%	71
DUDLEY PCT	1,730	54,175	3.2%	72
WALSALL TEACHING PCT	1,624	51,233	3.2%	73
HEYWOOD, MIDDLETON AND ROCHDALE PCT	1,141	36,381	3.1%	74
EAST AND NORTH HERTFORDSHIRE PCT	1,475	47,124	3.1%	75
GREAT YARMOUTH AND WAVENEY PCT	569	18,661	3.0%	76
SUFFOLK PCT	1,515	49,808	3.0%	77
BOURNEMOUTH AND POOLE PCT	721	24,025	3.0%	78
NEWCASTLE PCT	1,174	39,998	2.9%	79
NORTH LANCASHIRE PCT	1,593	55,156	2.9%	80
DORSET PCT	1,919	67,424	2.8%	81
TRAFFORD PCT	618	21,755	2.8%	82
NORTH SOMERSET PCT	375	13,249	2.8%	83
LEEDS PCT	2,890	102,254	2.8%	84
EAST RIDING OF YORKSHIRE	767	27,269	2.8%	85

PCT				
BEDFORDSHIRE PCT	1,021	36,399	2.8%	86
NEWHAM PCT	1,212	44,357	2.7%	87
CALDERDALE PCT	443	16,216	2.7%	88
BROMLEY PCT	942	34,575	2.7%	89
BRADFORD AND AIREDALE PCT	1,838	67,627	2.7%	90
SOUTH BIRMINGHAM PCT	2,785	102,477	2.7%	91
BERKSHIRE EAST PCT	1,049	38,727	2.7%	92
WEST KENT PCT	1,500	55,403	2.7%	93
HAMPSHIRE PCT	3,058	114,152	2.7%	94
REDCAR AND CLEVELAND PCT	405	15,147	2.7%	95
BRISTOL PCT	1,154	43,655	2.6%	96
WOLVERHAMPTON CITY PCT	1,463	55,389	2.6%	97
CAMBRIDGESHIRE PCT	1,586	60,679	2.6%	98
MID ESSEX PCT	832	32,122	2.6%	99
DERBY CITY PCT	894	34,655	2.6%	100
SUNDERLAND TEACHING PCT	805	32,384	2.5%	101
WORCESTERSHIRE PCT	1,572	64,815	2.4%	102
DEVON PCT	2,273	94,395	2.4%	103
LINCOLNSHIRE PCT	1,184	49,938	2.4%	104
SOLIHULL CARE PCT	733	33,228	2.2%	105
BUCKINGHAMSHIRE PCT	1,102	50,188	2.2%	106
PETERBOROUGH PCT	744	34,131	2.2%	107
ISLE OF WIGHT NHS PCT	1,939	89,718	2.2%	108
BASSETLAW PCT	187	8,802	2.1%	109
STOCKPORT PCT	534	25,441	2.1%	110
PLYMOUTH TEACHING PCT	1,221	58,618	2.1%	111
WILTSHIRE PCT	1,117	54,007	2.1%	112
NORTH TYNESIDE PCT	429	21,028	2.0%	113
LEICESTERSHIRE COUNTY AND RUTLAND PCT	1,490	74,128	2.0%	114
GATESHEAD PCT	438	21,842	2.0%	115
WARRINGTON PCT	459	24,091	1.9%	116
WAKEFIELD DISTRICT PCT	751	39,708	1.9%	117
COUNTY DURHAM PCT	1,413	75,549	1.9%	118
SOUTH STAFFORDSHIRE PCT CENTRAL AND EASTERN CHESHIRE PCT	1,014	54,600	1.9%	119
	857	46,252	1.9%	120
NORTHAMPTONSHIRE PCT	1,103	60,089	1.8%	121
EAST LANCASHIRE PCT	1,166	64,441	1.8%	122
SOUTHAMPTON CITY PCT	747	41,344	1.8%	123
SOMERSET PCT	903	50,217	1.8%	124
WIRRAL PCT	605	34,276	1.8%	125
MEDWAY PCT	578	33,042	1.7%	126
CUMBRIA PCT	1,171	67,584	1.7%	127
NORTH STAFFORDSHIRE PCT	385	24,745	1.6%	128
NORTH LINCOLNSHIRE PCT	297	19,099	1.6%	129
EASTERN AND COASTAL KENT PCT	1,215	78,200	1.6%	130
SEFTON PCT	538	34,704	1.6%	131
DERBYSHIRE COUNTY PCT	1,687	108,980	1.5%	132
SANDWELL PCT	553	37,066	1.5%	133
MIDDLESBROUGH PCT	299	20,713	1.4%	134
HASTINGS AND ROTHER PCT	251	17,890	1.4%	135
ASHTON, LEIGH AND WIGAN PCT	525	40,642	1.3%	136

BEXLEY CARE PCT	274	21,740	1.3%	137
DONCASTER PCT	368	29,798	1.2%	138
DARLINGTON PCT	136	11,704	1.2%	139
STOKE ON TRENT PCT	445	41,275	1.1%	140
KIRKLEES PCT	354	33,182	1.1%	141
HARROW PCT	204	20,095	1.0%	142
LUTON PCT	152	15,830	1.0%	143
BERKSHIRE WEST PCT	374	42,603	0.9%	144
NORTH YORKSHIRE AND YORK PCT	1,024	119,087	0.9%	145
GLOUCESTERSHIRE PCT	550	69,337	0.8%	146
NORTH TEES PCT	113	15,675	0.7%	147
HARTLEPOOL PCT	83	12,209	0.7%	148
WESTERN CHESHIRE PCT	194	29,475	0.7%	149
LEICESTER CITY PCT	183	30,537	0.6%	150
HALTON AND ST HELENS PCT	99	37,333	0.3%	151
CORNWALL AND ISLES OF SCILLY PCT	92	58,988	0.2%	152
<b>Primary Care Trusts - Totals</b>	<b>241,940</b>	<b>6,545,100</b>	<b>3.7%</b>	

Finally, rankings for SHAs are shown in the table below. By a considerable margin, Yorkshire and the Humber SHA spends the highest proportion of its paybill on agency staff.

**Table 3: Expenditure on agency staff amongst SHAs**

<b>Strategic Health Authorities</b>	<b>Total agency Staff Salaries &amp; Wages (£000s)</b>	<b>Total Revenue Expenditure on Salaries &amp; Wages (£000s)</b>	<b>Expenditure on agency staff as a percentage of total paybill</b>	<b>Rank</b>
YORKSHIRE AND THE HUMBER SHA	6,772	33,304	20.3%	1
LONDON SHA	1,676	36,356	4.6%	2
NORTH WEST SHA	954	23,511	4.1%	3
SOUTH CENTRAL SHA	818	23,750	3.4%	4
EAST OF ENGLAND SHA	776	26,663	2.9%	5
EAST MIDLANDS SHA	320	14,111	2.3%	6
SOUTH EAST COAST SHA	213	10,712	2.0%	7
WEST MIDLANDS SHA	442	23,968	1.8%	8
SOUTH WEST SHA	288	21,531	1.3%	9
NORTH EAST SHA	122	9,967	1.2%	10
<b>SHA Totals</b>	<b>12,381</b>	<b>223,873</b>	<b>5.5%</b>	



