

HOMELESSNESS IN ENGLAND

- Around 13,300 households in England were accepted as homeless and in priority need in Q1 2018, a decrease of around 9% on Q1 2017.
- Of these, 25% had lost their previous home due to the end of an assured shorthold tenancy, 27% due to relatives/friends no longer being able or willing to accommodate them, 12% due to a violent relationship breakdown and 5% due to rent/mortgage arrears.
- Around 79,880 households were in temporary accommodation arranged by local authorities in Q4 2018, a rise of 3% on Q1 2017.

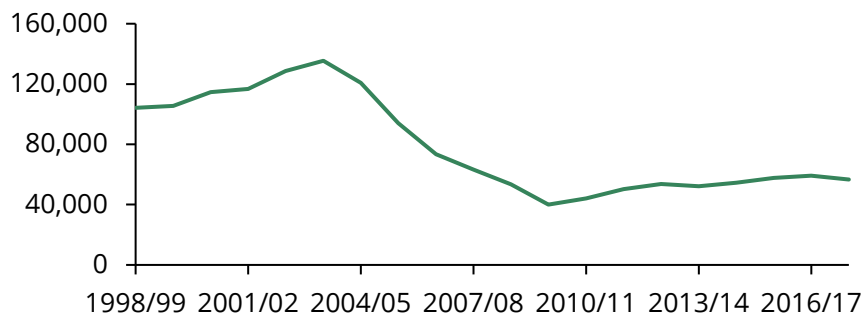
HOUSEHOLDS UNINTENTIONALLY HOMELESS and in priority need (accepted), 1st quarter 2018, England

| | | England | Per cent |
|------------------|--------------------------------|---------------|------------|
| Ethnicity | White | 8,470 | 64 |
| | Black | 1,840 | 14 |
| | Asian | 1,200 | 9 |
| | Mixed | 490 | 4 |
| | Other | 580 | 4 |
| | Not stated | 710 | 5 |
| Age range | 16-24 | 2,800 | 21 |
| | 25-44 | 7,910 | 59 |
| | 45-59 | 2,040 | 15 |
| | 60-64 | 220 | 2 |
| | 65-74 | 230 | 2 |
| | 75+ | 90 | 1 |
| Household | Couple with dependent children | 2,480 | 19 |
| | Lone parent with dep. children | 6,810 | 51 |
| | ...Male applicant | 550 | 4 |
| | ...Female applicant | 6,260 | 47 |
| | One person household, male | 2,010 | 15 |
| | One person household, female | 1,370 | 10 |
| | All other households | 640 | 5 |
| | Total | 13,300 | 100 |

Source: DCLG Homelessness Statistics, 1st quarter 2018

Last updated: June 2018

HOUSEHOLDS ACCEPTED AS UNINTENTIONALLY HOMELESS & in priority need, England



HOUSEHOLDS IN TEMPORARY ACCOMMODATION ARRANGED BY LA, ENGLAND

| | Bed and Breakfast Hotels | Hostels/ Women's Refuges | Leased dwellings | Other | Total |
|---------|--------------------------|--------------------------|------------------|--------|---------|
| 2002 Q1 | 12,710 | 9,570 | 20,660 | 40,850 | 80,200 |
| 2003 Q1 | 12,440 | 10,050 | 28,370 | 42,280 | 89,040 |
| 2004 Q1 | 7,090 | 10,790 | 42,390 | 40,680 | 97,680 |
| 2005 Q1 | 6,780 | 10,280 | 46,530 | 41,680 | 101,070 |
| 2006 Q1 | 5,150 | 9,010 | 49,660 | 37,050 | 96,370 |
| 2007 Q1 | 4,310 | 7,640 | 45,600 | 34,720 | 87,120 |
| 2008 Q1 | 3,840 | 6,450 | 40,480 | 32,950 | 77,510 |
| 2009 Q1 | 2,450 | 5,170 | 37,450 | 23,920 | 64,000 |
| 2010 Q1 | 2,050 | 4,240 | 30,920 | 17,490 | 51,310 |
| 2011 Q1 | 2,750 | 4,250 | 26,960 | 18,200 | 48,240 |
| 2012 Q1 | 3,960 | 4,360 | 26,040 | 20,940 | 50,430 |
| 2013 Q1 | 4,510 | 4,480 | 26,260 | 27,080 | 55,320 |
| 2014 Q1 | 4,370 | 4,880 | 25,270 | 33,230 | 58,410 |
| 2015 Q1 | 5,270 | 5,040 | 23,990 | 44,020 | 64,710 |
| 2016 Q1 | 5,960 | 5,570 | 24,420 | 35,720 | 71,670 |
| 2017 Q1 | 6,580 | 5,740 | 24,510 | 40,400 | 77,220 |
| 2018 Q1 | 5,940 | 5,460 | 25,280 | 43,200 | 79,880 |

Source: DCLG Statutory Homelessness: 1st quarter 2018, England

Contact: Cassie Barton x2210