

DEFENCE EMPLOYMENT (UK)

At 1 September 2017 the total strength of the full time trained and untrained UK Armed Forces was 155,223. There were 88,049 personnel in the Army, 33,135 in the Naval Service, and 34,039 in the RAF.

The trained strength of the UK Armed Forces at 1 September 2017 was 137,720 - this was a deficit of 7,693 under the required 145,413 personnel.

The total strength of the full time trained and untrained UK Regular Forces at 1 September 2017 was 147,281. This was around 23.2% lower than the strength recorded on 1 April 2010, 29.1% lower than 1 April 2000, and 54.1% lower than 1 April 1980.

At 1 April 2017 there were 15,270 women (10.2%) within the UK Regular Forces and 10,680 (7.2%) BAME personnel. Just under half of all UK Regular personnel were under the age of 30.

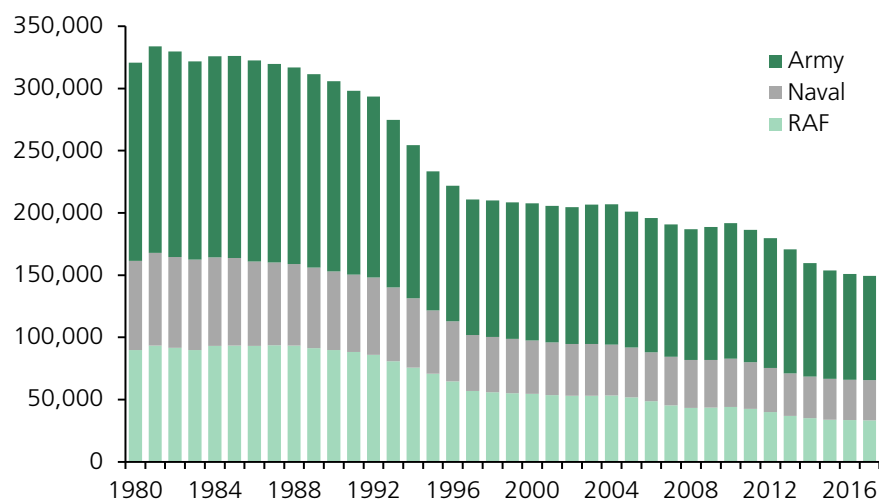
UK REGULAR FORCES STRENGTH

Trained and untrained, at 1 April

Year	Officers				All Ranks			
	Army	Naval	RAF	Total	Army	Naval	RAF	Total
1980	17,100	10,100	14,900	41,900	159,100	71,900	89,700	320,600
1990	17,400	10,100	15,300	42,900	152,800	63,300	89,700	305,800
1995	14,000	8,800	12,800	35,600	111,700	50,900	70,800	233,300
2000	13,870	7,660	10,990	32,520	110,050	42,850	54,720	207,610
2005	14,660	7,730	10,620	33,000	109,290	39,940	51,870	201,100
2006	14,730	7,660	10,310	32,700	107,730	39,390	48,730	195,850
2007	14,640	7,580	9,960	32,170	106,340	38,850	45,480	190,670
2008	14,550	7,480	9,700	31,730	104,980	38,560	43,370	186,910
2009	14,510	7,410	9,780	31,700	106,700	38,340	43,560	188,600
2010	14,640	7,460	9,820	31,930	108,920	38,730	44,050	191,710
2011	14,760	7,410	9,660	31,830	106,240	37,660	42,460	186,360
2012	14,480	7,190	9,030	30,700	104,250	35,540	40,000	179,800
2013	13,890	6,940	8,230	29,060	99,730	33,960	37,030	170,710
2014	13,204	6,804	7,846	27,854	91,066	33,334	35,227	159,627
2015	12,831	6,775	7,628	27,234	87,058	32,739	33,927	153,724
2016	12,591	6,772	7,456	26,819	85,038	32,502	33,456	150,996
2017	12,679	6,793	7,519	26,991	83,561	32,544	33,261	149,366

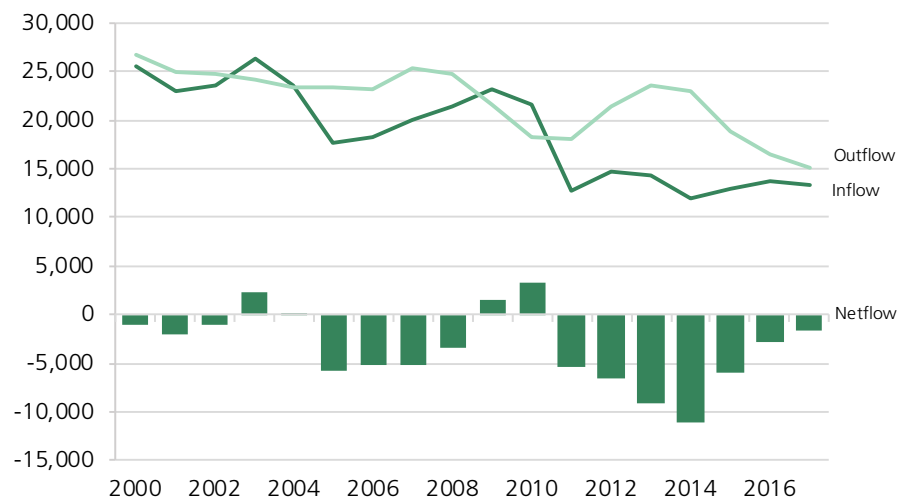
UK REGULAR FORCES STRENGTH

Trained and untrained, as at 1 April 1980-2017



TOTAL UK REGULAR FORCES: INFLOW AND OUTFLOW

2000-2017, 12 months to 31 March



Contact: Noel Dempsey 6177