



RESEARCH PAPER 99/73
27 JULY 1999

The National Lottery

This paper outlines how money raised through National Lottery ticket sales is distributed between prize money, good causes, Camelot and the Government. It presents statistics on the number and value of the awards from the National Lottery distributing bodies by region and constituency. The paper also contains information on trends in ticket sales, looks at the odds of winning and at the pattern of winning numbers.

This paper updates research paper 98/98

Bryn Morgan and Laura Bardgett

SOCIAL AND GENERAL STATISTICS SECTION

HOUSE OF COMMONS LIBRARY

Recent Library Research Papers include:

99/58	The <i>Pollution Prevention and Control Bill</i> [HL] [Bill 107 of 1998-99]	03.06.99
99/59	Buses	08.06.99
99/60	Hospital waiting lists and waiting times	14.06.99
99/61	Freedom of Information - The Continuing Debate	16.06.99
99/62	Unemployment by Constituency - May 1999	16.06.99
99/63	By-elections since the 1997 general election	17.06.99
99/64	Elections to the European Parliament - June 1999	21.06.99
99/65	The <i>Food Standards Bill</i> [Bill 117 of 1998-99]	18.06.99
99/66	Kosovo: KFOR and Reconstruction	18.06.99
99/67	The Burden of Taxation	25.06.99
99/68	<i>Financial Services and Markets Bill</i> [Bill 121 of 1998-99]	24.06.99
99/69	Economic Indicators	01.07.99
99/70	The August Solar Eclipse	30.06.99
99/71	Unemployment by Constituency - June 1999	14.07.99
99/72	<i>Railways Bill</i> [Bill 133 of 1998-99]	15.07.99

Research Papers are available as PDF files:

- *to members of the general public on the Parliamentary web site,
URL: <http://www.parliament.uk>*
- *within Parliament to users of the Parliamentary Intranet,
URL: <http://hcl1.hclibrary.parliament.uk>*

Library Research Papers are compiled for the benefit of Members of Parliament and their personal staff. Authors are available to discuss the contents of these papers with Members and their staff but cannot advise members of the general public.

Users of the printed version of these papers will find a pre-addressed response form at the end of the text.

Summary of main points

- Since its launch in November 1994 National Lottery ticket sales have nearly reached £22 billion.
- By the end of March 1999 over £6 billion had been raised for good causes in the United Kingdom and it is estimated that by the end of Camelot's 7-year licence in September 2001, the Lottery will have generated nearly £11 billion for good causes.
- £664 million was paid to Government in Lottery Duty, corporation tax and VAT in 1998/99.
- Retailer commission in 1998/99 was £265 million.
- 38,500 Lottery awards had been made by the end of June 1999, with an average value of £172,000 each.
- The National Endowment for Science, Technology and the Arts (NESTA) was established to support and promote talent, innovation and creativity in these fields. NESTA received an endowment from the National Lottery of £200 million, which it has invested to generate an income of £10-12m per year.
- In the United Kingdom as a whole £112 per head of population has been given to good causes. Regional variations range from £59 a head in Eastern region to £294 a head in London.
- On average each parliamentary constituency has received 58 awards totalling just under £10 million.
- The constituency of Cities of London and Westminster has received the most Lottery grants both in terms of the number of awards (376) and the total value of awards (£1 billion).
- The constituency which has received the fewest awards from the Lottery is Billericay with 5. Brent North has been awarded the lowest value, £283,000.

CONTENTS

I	Introduction	7
	A. Distribution of sales	7
	1. National Lottery Distribution Fund	7
	2. Government	8
	3. Retailers	8
	4. Camelot	8
	B. Distribution of Lottery funds to good causes	10
II	Regional and constituency analysis of awards	13
III	Ticket sales	47
Appendix		
	Addresses of distributing bodies	49
	National Lottery – facts and figures	50

TABLES AND CHARTS

Table 1	National Lottery: Where the money goes	9
Table 2	Lottery awards by distributing body	14
Table 3	Number of Lottery awards by ‘good cause’ and region	15
Table 4	Value of awards by ‘good cause’ and region	16
Table 5	Average value of awards by ‘good cause’ and region	17
Table 6	Number of awards per million population by ‘good cause’ and region	18
Table 7	Value of awards per head by ‘good cause’ and region	19
Table 8	Number of awards per head by region and year	20
Table 9	Value of awards by region and year	21
Table 10	Constituencies with the highest and lowest number and values of awards	22
Table 11	Number of awards by ‘good cause’ and constituency	23
Table 12	Value of awards by ‘good cause’ and constituency	35
Chart 1	Ticket Sales	47
Chart 2	Frequency of Lottery numbers in numerical order	51
Chart 3	Frequency of Lottery numbers in frequency order	51

I Introduction

The National Lottery was established under the *National Lottery etc Act 1993*, and began life on 14 November 1994. Since then about 50% of the Lottery's proceeds have gone in prizes, and 28% to the good causes through the National Lottery Distribution Fund (NLDF).¹ About 30 million people play it every week, by buying tickets for the two weekly 'on-line' draws or purchasing 'instant-win' scratchcards. In the last financial year, 1998/99, ticket sales were worth just over £5.2 billion. Total ticket sales to the end of June 1999 have been £23.0 billion².

A. Distribution of sales

Over the lifetime of the current Lottery licence, the money from ticket sales will be allocated in the following proportions:

50%	Prize winners
28%	National Lottery Distribution Fund
13%	Lottery Duty, Corporation Tax and VAT
5%	Retailer commission
3%	Camelot operating expenses
1%	Profit

Table 1 on page 9 shows figures taken from Camelot's accounts for the financial years since 1994/95. In 1998/99 ticket sales totalled £5.2 billion. Of this, £2.6 billion was given in prize money, £625 million was paid in Lottery Duty and £1.5 billion was paid to the National Lottery Distribution Fund (NLDF).

1. National Lottery Distribution Fund

The largest part of the money accruing to the National Lottery Distribution Fund (NLDF) comes from the Ticket Sales Payment as set out in the licence agreement. Each week Camelot is obliged to pay a percentage of net (after Lottery Duty) ticket sales to the NLDF. The percentages are set for different levels of ticket sales such that the marginal rate of payment to the NLDF increases with ticket sales. In 1998/99 28.6% of sales were paid to the NLDF.

There are also other transfers to the NLDF. The aggregate value of all unclaimed prizes for which the claim period has expired is paid to the NLDF. Camelot forecasts that unclaimed

¹ Barring operating expenses, the remainder is shared between the Exchequer - in the form of lottery duty - retailers who sell lottery tickets and the Lottery operator, Camelot.

² Camelot Press Release, *Camelot on track to meet increase target of £10 bn for Good Causes*, 1 June 1999

prizes would amount to 1.0% of ticket sales each year. In 1998/99 total unclaimed prize money paid into the NLDF will be £88 million³, which is about 1% of prize money.

2. Government

Lottery Duty has been set at 12%. Lottery Duty is intended to be revenue-neutral, making up for lost VAT on other retail sales. If spending is diverted to lottery tickets from products attracting high levels of duty (alcohol, tobacco etc.) then the Exchequer loses out. Conversely if spending is diverted from low-taxed items (confectionery, newspapers) or from planned savings, the Exchequer gains. As ticket sales have been higher than forecast, so has the amount raised from Lottery Duty. Table 2 on page 14 shows that £143 million was paid in Lottery Duty in 1994/95, £626 million in 1995/96 and £567 million in 1996/97, £662 million in 1997/98 and £625 million in 1998/99.

Other payments to the Exchequer will include Corporation Tax on Camelot's profits. This tax amounted to £104 million in the first five financial years of operation. As sales of Lottery tickets are exempt from VAT, VAT is not recoverable on the company's costs and is therefore a charge against profits. The VAT charge for Camelot for 1998/99 was £18 million compared with £20 million in 1997/98; this includes VAT on capital expenditure. In 1998/99, the total amount raised by the Exchequer from the Lottery in terms of Lottery Duty, Corporation Tax and VAT was £664 million, or 12.8% of ticket sales.

3. Retailers

The Camelot retailer agreement allows retailers to earn 5% commission on sales of both the on-line and instants games, as well as earning 1% commission on prizes paid out between £10 and £200. For this reason, the proportion of sales going to retailers has been around 5.1% in each year. Retailer commission for the year 1998/99 totalled £256 million and since the launch, on-line retailers have each benefited by an average £32,000 commission.⁴

4. Camelot

After Lottery Duty, payments to the NLDF, retailers' commission and prizes, Camelot was left with around 4.8% of ticket sales in 1998/99. £181 million or 3.8% of ticket sales was paid in operating costs, consisting mainly of advertising and marketing expenditure, administration costs and depreciation. Operating costs also include terminal and data communication costs - mainly the cost of maintaining the terminals and on-line lottery network. This left profit after tax at around 1.0% of ticket sales or about £50 million.

³ Includes prize fund shortfall, Camelot Annual Review 1999, *Add Something Extra*

⁴ Camelot Press Release, *Camelot on track to meet increase target of £10 bn for Good Causes*, 1 June 1999

Table 1

National Lottery: Where the money goes

	1994/95	1995/96	1996/97	1997/98	1998/99	Total
<i>£ million</i>						
Sales						
On-line	1,157	3,694	3,847	4,713	4,538	17,948
Instants	34	1,523	877	801	669	3,904
Total	1,191	5,217	4,723	5,514	5,207	21,851
Prizes	562	2,643	2,384	2,735	2,580	10,903
Lottery Duty	143	626	567	662	625	2,622
National Lottery Distribution Fund	317	1,416	1,273	1,567	1,487	6,060
Retailers ' commission	61	265	242	282	265	1,114
Operating costs ^(a)	99	190	187	183	181	839
<i>of which VAT</i>	22	25	19	20	18	104
Corporation Tax	5	26	24	27	22	104
Profit on ordinary activities after taxation	6	51	47	59	49	212
Total to Government (Duty, VAT, Tax)	169	677	610	709	664	2,830
<i>Percentages</i>						
Sales						
On-line	97.2%	70.8%	81.4%	85.5%	87.2%	82.1%
Instants	2.8%	29.2%	18.6%	14.5%	12.8%	17.9%
Total	100.0%	100.0%	100.0%	100.0%	100.0%	100.0%
Prizes	47.2%	50.7%	50.5%	49.6%	49.5%	49.9%
Lottery Duty	12.0%	12.0%	12.0%	12.0%	12.0%	12.0%
National Lottery Distribution Fund	26.6%	27.1%	26.9%	28.4%	28.6%	27.7%
Retailers ' commission	5.1%	5.1%	5.1%	5.1%	5.1%	5.1%
Operating costs ^(a)	8.3%	3.6%	4.0%	3.3%	3.5%	3.8%
<i>of which VAT</i>	1.8%	0.5%	0.4%	0.4%	0.3%	0.5%
Corporation Tax	0.4%	0.5%	0.5%	0.5%	0.4%	0.5%
Profit on ordinary activities after taxation	0.5%	1.0%	1.0%	1.1%	0.9%	1.0%
Total to Government (Duty, VAT, Tax)	14.2%	13.0%	12.9%	12.9%	12.8%	13.0%

Notes: (a) including terminal and data communication costs

Sources: Camelot Annual Report and Accounts 1996; Camelot News Release 19/9/96

B. Distribution of Lottery funds to good causes

When Camelot's 7-year licence to run the Lottery began in November 1994, it was expected that the total sales of the Lottery would amount to £32 billion, of which £9 billion would go to good causes. At present, it is forecast that the Lottery will generate about £11 billion for good causes by the end of the licence in September 2001,⁵ which suggests total ticket sales will be in the region of £39 billion. The first awards for projects were made in spring 1995, by the end of June 1999 nearly 39,000 awards had been made, worth £6½ billion in total.

The distributing bodies who allocate Lottery funds for six good causes are:

- The Arts Councils for England, Scotland, Wales and Northern Ireland
- The National Lottery Charities Board (NLCB)
- The National Heritage Memorial Fund
- The UK Sports Council & the Sports Councils for England, Scotland, Wales and Northern Ireland
- The Millennium Commission
- The New Opportunities Fund (NOF)

Each of the thirteen bodies are responsible for sifting through the applications made to them for Lottery money, determining which are eligible, and deciding which among these should be awarded a grant. They are required to comply with directions given by the Secretary of State, on matters of policy and financial propriety - but the Secretary of State does *not* have any role in deciding which applications for Lottery grants are successful.

The New Opportunities Fund (NOF) - the new sixth good cause - was set up under the *National Lottery Act 1998* - and only started inviting applications for grants from January 1999.⁶ The creation of NOF was set out in the White Paper - *A People's Lottery* - published in July 1997.⁷ At this time, the predicted size of the NLDF over the seven year licence was £10 billion - £1 billion more than first estimated - and it was proposed that this "extra" £1 billion be channelled into a new fund to support initiatives in health, education and the environment, and a one-off £200 million grant to set up 'NESTA' (the National Endowment of Science, Technology and the Arts). By October 1999 the official estimate of the NLDF over its lifetime had risen to £10.6 billion, and the Government proposed splitting the proceeds thus: £1.9 billion to arts, charities, heritage and sport, £2.0 billion to the Millennium Commission, and the remainder to NOF.⁸

⁵ HC Deb. 15 June 1999 c 89W

⁶ Prior to the introduction of NOF, the NLDF was divided into five equal parts for the five good causes: arts, sport, the heritage, charities and the celebration of the millennium.

⁷ Cm 3709 July 1997

⁸ HC Deb. 19 October 1998 c 919W

Legislation amending each distributing body's percentage share of the NLDF was introduced in February 1999.⁹ For a temporary 13-week period starting on 15 February, the shares of the NLDF going to arts, charities, heritage and sport were 5%, as NOF's share rose to 60%.¹⁰ From 17 May, the share of the first four bodies has returned to $16\frac{2}{3}\%$, as NOF's share has fallen to $13\frac{1}{3}\%$.¹¹ Once the Millennium Commission's total Lottery income reaches its target of £2,017 million, it is intended that its current 20% share will go to NOF. As mentioned above, current forecasts suggest the total the Lottery will raise at least £10.9 billion for the good causes by September 2001 - a £250 million increase on the forecast last autumn. It is anticipated that NOF will take one-third of this, while the remaining four original causes share the remainder.¹²

In the case of four of the six good causes, the share of money received by each country in the United Kingdom is specified. The money allotted to arts and sports is divided among the four countries of the UK according to population, though in the case of sports, a 'top' slice of 9.2% goes to the UK Sports Council for UK-wide projects.¹³ Both the National Lottery Charities Board and NOF divide their share between the four countries on the basis of population figures weighted for deprivation.¹⁴ Similar arrangements do not apply to either heritage or millennium funding. The geographical distribution of funds across these four causes is shown below:

	Arts	Charities	Sports	NOF ¹⁵
England	83.3%	77.5%	75.6%	77.5%
Scotland	8.9%	11.5%	8.1%	11.5%
Wales	5.0%	6.5%	4.5%	6.5%
Northern Ireland	2.8%	4.5%	2.6%	4.5%

⁹ Under the *Apportionment of Money in the National Lottery Distribution Fund Order* SI 1999/344. With the creation of NOF, the distribution of funds had been provided for initially under section 15 of the *National Lottery Act 1998*: from 14 October 1997, arts, charities, heritage and sport each received $16\frac{2}{3}\%$ of the NLDF; NOF received $13\frac{1}{3}\%$; and the Millennium Commission received 20%. It had been proposed to swap the shares of NOF and the Commission from September 1999.

¹⁰ This temporary increase in cashflow to NOF was to guarantee that it would receive the additional £400 million from the NLDF, allocated to it in October 1998.

¹¹ The Secretary of State has given guarantees that there will be no further change to the percentages of these four original good causes up to and beyond the end of the licence [HL Deb. 12 April 1999 c 104WA].

¹² DCMS press notice 140/99, 17 May 1999

¹³ Under section 23 of the *National Lottery Act 1993*, as amended. The UK Sports Council was established in July 1998; its share of Lottery funds come from that part of the NLDF already allocated to the good cause of sport (DCMS press notice 142/98, 2 July 1998).

¹⁴ For NOF, these shares are specified in the policy directions issued to the Fund by the Secretary of State (the current directions were issued on 26 April 1999). For the NLCB these shares are self-imposed.

¹⁵ In the case of one NOF initiative - IT training - the percentage breakdown is slightly different; for training teachers and school library staff, the most important part of this initiative, the shares are England 79.7%; Scotland 10.1%; Wales 5.5%; Northern Ireland 4.7%.

Those considering an application for Lottery funding are best advised to contact the relevant distributing body directly and obtain an application pack. This gives guidance on eligibility, as well as setting out the mechanics of making an application. A list of addresses is given in appendix to this paper. Those interested may wish to refer to, *The National Lottery Yearbook*, published by the Directory of Social Change - an annual guide whose purpose is to provide all the information needed by those concerned with Lottery policies, practices and outcomes.

Many organisations have been unsuccessful in attracting Lottery funding. Since the National Lottery began, applications for funds have always outstripped those available by a considerable margin - and although prospective applicants have lowered their expectations of late, this remains the case. For example, in its *Annual Report* the National Lotteries Charities Board state that it received 20,283 applications in 1997/98 - of which only 6,837 were successful.¹⁶ In this context it is unsurprising that many worthy causes may have found it difficult to win grants - and, given the sheer diversity of applicants, that some commentators have taken exception to some successful grants for certain causes, because they find little sympathy with the cause itself.

It is important to stress that Lottery grants are not awarded solely on the basis of the 'worthiness' - if one can put it that way - of the cause that is to be funded. Important factors in a successful application will include, addressing the criteria and policy of the relevant distributing body; appropriate financial and management structures; evidence of need; and, commitment to equal opportunities in policy and practice and user involvement. Finally, it is worth underlining that unsuccessful applicants are not prevented from reapplying.

¹⁶ *National Lottery Charities Board Annual Report 1997-98* p 27

II Regional and constituency analysis of awards

This section of the paper examines the breakdown of lottery awards by cause, region, and constituency. Awards made have been allocated to individual regions and constituencies mainly on the basis of the postal address of the recipient body. In some cases this does not correspond with the ultimate location of the project. Also, a number of awards are of benefit to a far wider area than the constituency and region to which they have been allocated. For example, awards to bodies based in London include many institutions that are considered of national importance and are of benefit to the country as a whole. The Department of Culture, Media and Sport (DCMS) has estimated that awards to these organisations account for around 60% of the total awarded to London.¹⁷

The data used are taken from the DCMS Awards Database. DCMS are reliant on the distributing bodies to provide details of individual awards. In some cases bodies may have announced awards but not yet given details to DCMS. This will particularly affect the figures in tables 8 and 9. As the New Opportunity Fund is a new distributor, they have not yet been included in the database. The fund has announced funding for teachers in about sixty schools to receive Information and Communication training before the end of this school year. The schools are in Cornwall, Gloucester, Herefordshire, Durham, Yorkshire and Cheshire. This is part of a £300 million ICT training initiative.¹⁸

Table 2 shows the number and value of awards by distributing body for awards on the Department's database at the end of June 1999. Tables 3 to 7 show the number and value of awards broken down by 'good cause' and region. In terms of the number of awards allocated to UK regions, the North East, the South West, Scotland, Wales and Northern Ireland had a greater number per capita than the UK as a whole (Tables 3 and 6). The value of awards per capita in London was, at £293.50, more than double that for the UK as a whole (Tables 4 and 7). The average value of award was also greatest in London (Table 5).

Tables 10 to 12 show the number and value of awards by constituency and good cause. Table 10 shows the 25 constituencies with the highest number and value of awards. Cities of London and Westminster has received both the highest number and highest value of awards with 376 awards worth £1.1 billion. Billericay has received the lowest number of awards with just 5, while Brent North has received the lowest value of awards with £263,000 compared with a constituency average of £9.9 million. Tables 11 and 12 show the number and value of awards respectively for each constituency, along with a ranking.

Details of individual awards to constituencies are available from the Department of Culture, Media and Sport's website at www.lottery.culture.gov.uk.

¹⁷ HC Deb. 24 November 1997 c383-4w

¹⁸ New Opportunities Fund press release, *NOF ICT training for Teacher Begins*, 18 June 1999

Table 2

Lottery Awards by Distributing Body
to end June 1999

	Number of awards	Value of awards (£ million)	Average value of award (£)
Arts	10,830	1,285	118,700
<i>Arts Council of England</i>	8,173	1,075	131,600
<i>Arts Council of Wales</i>	1,472	68	46,300
<i>Scottish Arts Council</i>	795	116	145,700
<i>Arts Council of Northern Ireland</i>	390	26	67,300
Heritage Lottery Fund	2,623	1,222	465,900
Millennium Commission	233	1,742	7,477,400
National Lottery Charities Board	20,524	1,081	52,600
Sports	4,146	1,069	257,700
<i>The English Sports Council</i>	2,892	921	318,500
<i>Sports Council for Wales</i>	362	46	126,000
<i>Scottish Sports Council</i>	497	72	145,500
<i>Sports Council for Northern Ireland</i>	395	30	75,000
Total ^(a)	38,359	6,599	172,000

Notes: (a) £200 million to NESTA

Sources: Department of Culture, Media and Sport (Awards Database)

Table 3

Number of Lottery Awards by 'good cause' and region: to end June 1999

	Arts	Charities	Heritage	Millennium Commission	Sport	Total ^(b)	As per cent of UK ^(a)	Per cent of mid-1997 UK resident population
North East	423	1,444	106	10	118	2,101	5.5%	4.4%
North West	646	1,122	204	16	317	2,305	6.0%	9.3%
Merseyside	157	418	41	7	36	659	1.7%	2.4%
Yorkshire and the Humber	890	1,250	216	18	292	2,666	7.0%	8.5%
East Midlands	664	923	163	14	279	2,043	5.3%	7.0%
West Midlands	1,199	1,213	176	13	246	2,847	7.4%	9.0%
Eastern	612	875	237	19	365	2,108	5.5%	9.0%
London	1,634	1,980	296	40	200	4,153	10.9%	12.1%
South East	1,116	1,406	292	28	592	3,434	9.0%	13.5%
South West	909	2,634	283	10	442	4,278	11.2%	8.3%
England	8,250	13,265	2,014	175	2,887	26,594	69.5%	83.5%
Wales	1,401	1,852	221	12	363	3,849	10.1%	5.0%
Scotland	730	4,588	284	24	495	6,121	16.0%	8.7%
Northern Ireland	378	807	104	18	392	1,699	4.4%	2.8%
United Kingdom ^(a)	10,759	20,512	2,623	229	4,137	38,263	100.0%	100.0%
Unknown/other	71	12	-	4	9	96		
Grand Total	10,830	20,524	2,623	233	4,146	38,359		

Notes: (a) UK excluding awards not allocated to a region

(b) £200 million to NESTA

Sources: Department of Culture, Media and Sport (Awards Database)

ONS Monitor 98/1 Mid-1997 population estimates for England and Wales

Table 4

Value of Lottery Awards by 'good cause' and region: to end June 1999

£ thousands

	Arts	Charities	Heritage	Millennium Commission	Sport	Total ^(b)	<i>As per cent of UK ^(a)</i>	Per cent of mid-1997 UK resident population
North East	75,652	59,404	42,320	58,440	57,838	293,655	4.5%	4.4%
North West	115,185	88,601	96,592	84,545	111,290	496,213	7.6%	9.3%
Merseyside	18,529	36,103	46,087	32,802	21,584	155,106	2.4%	2.4%
Yorkshire and the Humber	66,363	81,306	65,231	130,350	81,163	424,414	6.5%	8.5%
East Midlands	28,242	61,494	37,015	51,290	77,786	255,826	3.9%	7.0%
West Midlands	127,201	91,082	59,052	94,352	60,668	432,355	6.6%	9.0%
Eastern	36,126	60,921	95,557	50,602	73,127	316,333	4.8%	9.0%
London	442,730	219,159	349,404	652,873	226,376	2,090,543	32.0%	12.1%
South East	108,691	92,206	111,160	62,390	127,318	501,765	7.7%	13.5%
South West	58,656	71,241	110,929	104,466	83,731	429,021	6.6%	8.3%
England	1,077,376	861,516	1,013,347	1,322,109	920,882	5,395,231	82.5%	83.5%
Wales	65,515	61,420	39,514	121,471	44,244	332,165	5.1%	5.0%
Scotland	105,765	111,261	140,520	181,243	72,308	611,096	9.3%	8.7%
Northern Ireland	25,135	45,370	28,798	74,153	29,426	202,882	3.1%	2.8%
United Kingdom ^(a)	1,273,791	1,079,567	1,222,179	1,698,977	1,066,861	6,541,374	100.0%	100.0%
Unknown/other	11,660	937	-	43,250	1,732	57,579		
Grand Total	1,285,451	1,080,504	1,222,179	1,742,227	1,068,593	6,598,953		

Notes: (a) UK excluding awards not allocated to a region

(b) £200 million to NESTA

Sources: Department of Culture, Media and Sport (Awards Database)

ONS Monitor 98/1 Mid-1997 population estimates for England and Wales

Table 5

Average value of lottery awards by 'good cause' and region: to end June 1999 (£)

	Arts	Charities	Heritage	Millennium Commission	Sport	Total ^(b)	<i>As per cent of overall average</i>
North East	178,800	41,100	399,200	5,844,000	490,200	139,800	81%
North West	178,300	79,000	473,500	5,284,000	351,100	215,300	125%
Merseyside	118,000	86,400	1,124,100	4,686,100	599,600	235,400	137%
Yorkshire and the Humber	74,600	65,000	302,000	7,241,700	278,000	159,200	93%
East Midlands	42,500	66,600	227,100	3,663,500	278,800	125,200	73%
West Midlands	106,100	75,100	335,500	7,257,800	246,600	151,900	88%
Eastern	59,000	69,600	403,200	2,663,300	200,300	150,100	87%
London	270,900	110,700	1,180,400	16,321,800	1,131,900	503,400	293%
South East	97,400	65,600	380,700	2,228,200	215,100	146,100	85%
South West	64,500	27,000	392,000	10,446,600	189,400	100,300	58%
England	130,600	64,900	503,200	7,554,900	319,000	202,900	118%
Wales	46,800	33,200	178,800	10,122,600	121,900	86,300	50%
Scotland	144,900	24,300	494,800	7,551,800	146,100	99,800	58%
Northern Ireland	66,500	56,200	276,900	4,119,600	75,100	119,400	69%
United Kingdom ^(a)	118,400	52,600	465,900	7,419,100	257,900	171,000	99%
Unknown/other	164,200	78,100	-	10,812,400	192,400	599,800	349%
Grand Total	118,700	52,600	465,900	7,477,400	257,700	172,000	100%

Notes: (a) UK excluding awards not allocated to a region

(b) £200 million to NESTA

Sources: Department of Culture, Media and Sport (Awards Database)

Table 6

Number of lottery awards per million population by 'good cause' and region: to end June 1999

	Arts	Charities	Heritage	Millennium Commission	Sport	Total ^(b)	<i>As per cent of UK ^(a)</i>
North East	163	557	41	4	45	810	125%
North West	118	205	37	3	58	421	65%
Merseyside	111	296	29	5	25	466	72%
Yorkshire and the Humber	177	248	43	4	58	529	82%
East Midlands	160	222	39	3	67	492	76%
West Midlands	225	228	33	2	46	535	83%
Eastern	115	164	44	4	68	395	61%
London	229	278	42	6	28	583	90%
South East	140	177	37	4	74	431	67%
South West	186	540	58	2	91	877	135%
England	167	269	41	4	59	540	83%
Wales	479	633	76	4	124	1,315	203%
Scotland	143	896	55	5	97	1,195	184%
Northern Ireland	226	482	62	11	234	1,014	156%
United Kingdom ^(a)	182	348	44	4	70	648	100%
Grand Total	184	348	44	4	70	650	100%

Notes: (a) UK excluding awards not allocated to a region

(b) £200 million to NESTA

Sources: *Department of Culture, Media and Sport (Awards Database)*

ONS Monitor 98/1 Mid-1997 population estimates for England and Wales

Table 7

	Value of lottery awards per head by 'good cause' and region: to end June 1999						£ per head
	Arts	Charities	Heritage	Millennium Commission	Sport	Total ^(b)	As per cent of UK ^(a)
North East	29.20	22.90	16.30	22.50	22.30	113.20	102%
North West	21.10	16.20	17.70	15.50	20.30	90.70	82%
Merseyside	13.10	25.50	32.60	23.20	15.30	109.70	99%
Yorkshire and the Humber	13.20	16.10	13.00	25.90	16.10	84.30	76%
East Midlands	6.80	14.80	8.90	12.30	18.70	61.60	56%
West Midlands	23.90	17.10	11.10	17.70	11.40	81.30	73%
Eastern	6.80	11.40	17.90	9.50	13.70	59.30	53%
London	62.20	30.80	49.10	91.70	31.80	293.50	265%
South East	13.70	11.60	14.00	7.80	16.00	63.00	57%
South West	12.00	14.60	22.70	21.40	17.20	88.00	79%
England	21.90	17.50	20.60	26.80	18.70	109.50	99%
Wales	22.40	21.00	13.50	41.50	15.10	113.50	102%
Scotland	20.60	21.70	27.40	35.40	14.10	119.30	108%
Northern Ireland	15.00	27.10	17.20	44.30	17.60	121.10	109%
United Kingdom ^(a)	21.60	18.30	20.70	28.80	18.10	110.90	100%
Grand Total	21.80	18.30	20.70	29.50	18.10	111.80	101%

Notes: (a) UK excluding awards not allocated to a region

(b) £200 million to NESTA

Sources: Department of Culture, Media and Sport (Awards Database)

ONS Monitor 98/1 Mid-1997 population estimates for England and Wales

Table 8

Number of lottery awards by year and region: to end June 1999

	Number					Per cent of total ^(a)				
	1995	1996	1997	1998	1999	1995	1996	1997	1998	1999
North East	177	276	817	604	227	4.1%	3.7%	5.8%	7.0%	6.0%
North West	339	579	740	401	246	7.9%	7.9%	5.2%	4.6%	6.6%
Merseyside	126	171	198	100	64	2.9%	2.3%	1.4%	1.2%	1.7%
Yorkshire and the Humber	324	564	995	410	373	7.5%	7.7%	7.0%	4.7%	9.9%
East Midlands	278	385	784	354	242	6.4%	5.2%	5.5%	4.1%	6.4%
West Midlands	313	569	1,260	395	310	7.3%	7.7%	8.9%	4.6%	8.3%
Eastern	265	429	774	363	277	6.1%	5.8%	5.5%	4.2%	7.4%
London	537	853	1,628	761	374	12.4%	11.6%	11.5%	8.8%	10.0%
South East	454	743	1,360	570	307	10.5%	10.1%	9.6%	6.6%	8.2%
South West	321	565	2,078	958	356	7.4%	7.7%	14.7%	11.0%	9.5%
England	3,134	5,134	10,634	4,916	2,776	72.6%	69.7%	75.2%	56.6%	74.0%
Wales	404	828	1,064	1,178	375	9.4%	11.2%	7.5%	13.6%	10.0%
Scotland	474	928	2,087	2,202	430	11.0%	12.6%	14.8%	25.4%	11.5%
Northern Ireland	303	479	360	385	172	7.0%	6.5%	2.5%	4.4%	4.6%
United Kingdom ^(a)	4,315	7,369	14,145	8,681	3,753	100.0%	100.0%	100.0%	100.0%	100.0%
Unknown/other	14	37	27	15	3					
Grand Total	4,329	7,406	14,172	8,696	3,756					

Notes: (a) UK excluding awards not allocated to a region

Sources: Department of Culture, Media and Sport (Awards Database)

Table 9

Value of lottery awards by year and region: to end June 1999

£ million

£ per head

	£ million					Per cent of total ^(a)					As per cent of UK ^(a)
	1995	1996	1997	1998	1999	1995	1996	1997	1998	1999	
North East	37.7	70.1	126.8	34.8	24.2	3.9%	4.2%	5.2%	2.7%	10.4%	4%
North West	46.4	155.9	188.4	87.0	18.5	4.8%	9.4%	7.7%	6.9%	8.0%	5%
Merseyside	13.7	18.8	74.1	43.3	5.2	1.4%	1.1%	3.0%	3.4%	2.2%	1%
Yorkshire and the Humber	89.2	99.8	161.8	58.4	15.2	9.3%	6.0%	6.6%	4.6%	6.5%	9%
East Midlands	28.6	58.1	110.0	45.8	13.3	3.0%	3.5%	4.5%	3.6%	5.7%	3%
West Midlands	65.8	150.6	106.0	89.5	20.5	6.9%	9.1%	4.4%	7.1%	8.8%	7%
Eastern	49.0	64.4	124.8	63.8	14.3	5.1%	3.9%	5.1%	5.0%	6.1%	5%
London	276.4	449.5	903.3	421.1	40.3	28.8%	27.2%	37.1%	33.3%	17.3%	29%
South East	88.3	120.4	133.2	133.6	26.3	9.2%	7.3%	5.5%	10.6%	11.3%	9%
South West	91.8	101.2	145.8	73.0	17.2	9.6%	6.1%	6.0%	5.8%	7.4%	10%
England	786.9	1,288.7	2,074.3	1,050.3	195.0	82.1%	78.1%	85.2%	83.0%	83.7%	82%
Wales	43.8	122.6	95.0	51.5	19.2	4.6%	7.4%	3.9%	4.1%	8.2%	5%
Scotland	105.1	196.9	180.6	120.2	8.2	11.0%	11.9%	7.4%	9.5%	3.5%	11%
Northern Ireland	22.3	41.4	84.6	44.0	10.5	2.3%	2.5%	3.5%	3.5%	4.5%	2%
United Kingdom ^(a)	958.1	1,649.7	2,434.6	1,266.1	232.9	100.0%	100.0%	100.0%	100.0%	100.0%	100%
Unknown/other	2.1	46.2	5.5	2.9	0.9						
Grand Total	960.1	1,695.9	2,440.1	1,269.0	233.8						

Notes: (a) UK excluding awards not allocated to a region

Sources: Department of Culture, Media and Sport (Awards Database)

Table 10

Top and bottom 25 constituencies ranked by number and value of awards
Cumulative total to end June 1999

By number			By Value		£ thousands
1	Cities of London and Westminster	376	1	Cities of London and Westminster	1,053,250
2	Holborn and St. Pancras	332	2	Holborn and St. Pancras	158,385
3	Islington South and Finsbury	280	3	Manchester, Central	135,582
4	Glasgow Kelvin	235	4	Birmingham, Ladywood	130,644
5	Edinburgh Central	230	5	Brent South	123,275
6	Sheffield Central	222	6	Glasgow Kelvin	106,494
7	Liverpool, Riverside	218	7	Liverpool, Riverside	100,587
8	Manchester, Central	211	8	Kensington and Chelsea	75,365
9	Montgomeryshire	207	9	Norwich South	69,565
10	Ceredigion	205	10	Islington South and Finsbury	68,151
11	Belfast South	192	11	Bristol West	67,225
12	Brecon and Radnorshire	183	12	Edinburgh Central	63,646
13	Belfast West	175	13	Sheffield Central	63,273
14 =	Galloway & Upper Nithsdale	173	14	Cardiff Central	58,748
14 =	Edinburgh North & Leith	173	15	Belfast North	57,861
16	Ross, Skye & Inverness West	170	16	Tyne Bridge	56,005
17	Vauxhall	168	17	Don Valley	54,872
18 =	Caithness, Sutherland & Easter Ross	164	18	Vauxhall	53,981
18 =	Birmingham, Ladywood	164	19	Portsmouth South	52,964
20	Torridge and West Devon	162	20	Salford	52,782
21	Inverness East, Nairn & Lochaber	161	21	Cardiff South and Penarth	49,350
22 =	West Dorset	152	22	Edinburgh North & Leith	49,207
22 =	Hackney South and Shoreditch	152	23	Truro and St. Austell	48,368
24 =	Regent's Park and Kensington North	151	24	Inverness East, Nairn & Lochaber	47,570
24 =	Bristol West	151	25	Nottingham South	47,081
633 =	Enfield North	16	635	Ruislip-Northwood	686
633 =	Croydon Central	16	636	Wirral South	681
633 =	Gillingham	16	637	Meriden	666
633 =	Barking	16	638	Walsall North	656
633 =	Makerfield	16	639	Billericay	623
633 =	Denton and Reddish	16	640	Wentworth	607
633 =	Croydon South	16	641	Birmingham, Northfield	601
642	Sittingbourne and Sheppey	15	642	Southend West	595
643 =	Luton North	14	643	Torbay	588
643 =	Eltham	14	644	Cannock Chase	587
645 =	Ruislip-Northwood	13	645	Denton and Reddish	579
645 =	Doncaster North	13	646	Carshalton and Wallington	571
645 =	Rayleigh	13	647	Bexleyheath and Crayford	556
648 =	Hornchurch	12	648	Reigate	540
648 =	Bexleyheath and Crayford	12	649	Romford	526
648 =	Upminster	12	650	Wirral West	524
651 =	Dagenham	11	651	Sittingbourne and Sheppey	499
651 =	Carshalton and Wallington	11	652	Doncaster North	477
651 =	Romford	11	653	South Staffordshire	459
654 =	Uxbridge	10	654	Upminster	412
654 =	Brent North	10	655	Hayes and Harlington	408
654 =	Southend West	10	656	Hornchurch	404
657	Birmingham, Hodge Hill	9	657	Birmingham, Hall Green	400
658	Hayes and Harlington	7	658	Morley and Rothwell	378
659	Billericay	5	659	Brent North	283

Notes: (a) Ranked from highest to lowest on basis of number of awards allocated to bodies in the constituency

Sources: *Department of Culture, Media and Sport (Awards Database)*

Table 11

Number of Lottery Awards by Constituency and Good Cause
Cumulative total to end June 1999

Rank ^(a)		Arts	Charities	Heritage	Millennium Commission	Sport	Total ^(b)
404	Aberavon	13	19	2	-	3	37
211	Aberdeen Central	17	37	5	-	2	61
449	Aberdeen North	2	28	1	-	3	34
434	Aberdeen South	2	23	1	-	9	35
147	Airdrie & Shotts	1	71	1	-	3	76
559	Aldershot	6	6	1	1	10	24
536	Aldridge-Brownhills	11	10	1	-	4	26
626	Altrincham and Sale West	8	6	2	-	1	17
211	Alyn and Deeside	10	39	2	-	10	61
449	Amber Valley	9	16	6	-	3	34
96	Angus	9	77	4	-	5	95
31	Argyll & Bute	11	109	6	-	17	143
404	Arundel and South Downs	16	9	6	-	6	37
468	Ashfield	7	25	1	-	-	33
238	Ashford	13	22	9	1	12	57
499	Ashton under Lyne	6	17	4	1	2	30
363	Aylesbury	8	22	4	1	6	41
181	Ayr	9	52	2	-	6	69
280	Banbury	11	24	5	1	10	51
211	Banff & Buchan	4	47	2	-	8	61
633	Barking	6	9	-	-	1	16
391	Barnsley Central	16	18	2	1	1	38
551	Barnsley East and Mexborough	3	19	1	-	2	25
368	Barnsley West and Penistone	11	20	5	-	4	40
191	Barrow and Furness	22	21	9	-	14	66
569	Basildon	3	15	1	1	3	23
391	Basingstoke	16	15	1	1	5	38
356	Bassetlaw	10	23	1	1	7	42
128	Bath	30	31	8	3	9	81
356	Batley and Spen	12	20	1	-	9	42
315	Battersea	27	15	2	1	2	47
536	Beaconsfield	9	7	1	-	9	26
449	Beckenham	10	17	2	-	5	34
266	Bedford	24	19	3	1	6	53
211	Belfast East	15	29	3	-	14	61
42	Belfast North	25	91	3	3	12	134
11	Belfast South	58	100	10	1	23	192
13	Belfast West	44	106	12	2	11	175
51	Berwick-upon-Tweed	19	89	11	-	7	126
26	Bethnal Green and Bow	55	80	7	1	3	146
253	Beverley and Holderness	14	22	9	-	10	55
449	Bexhill and Battle	9	13	1	-	11	34
648	Bexleyheath and Crayford	1	7	2	-	2	12
659	Billericay	3	1	-	-	1	5
304	Birkenhead	5	34	3	-	6	48
290	Birmingham, Edgbaston	25	19	4	-	2	50
536	Birmingham, Erdington	15	10	-	1	-	26
551	Birmingham, Hall Green	16	7	-	-	2	25
657	Birmingham, Hodge Hill	2	3	1	-	3	9
18	Birmingham, Ladywood	79	64	13	3	5	164
615	Birmingham, Northfield	6	12	-	-	-	18
404	Birmingham, Perry Barr	13	21	1	-	2	37
154	Birmingham, Selly Oak	48	24	-	1	2	75
100	Birmingham, Sparkbrook and Small Heath	53	36	1	-	3	93
526	Birmingham, Yardley	10	14	1	-	2	27
116	Bishop Auckland	21	52	6	-	6	85
421	Blaby	11	13	1	-	11	36
382	Blackburn	9	22	4	-	4	39

Table 11

Number of Lottery Awards by Constituency and Good Cause
Cumulative total to end June 1999

Rank ^(a)		Arts	Charities	Heritage	Millennium Commission	Sport	Total ^(b)
633	Blackpool North and Fleetwood	5	4	2	-	5	16
589	Blackpool South	5	12	1	-	3	21
196	Blaenau Gwent	31	29	2	-	3	65
368	Blaydon	8	21	4	1	6	40
196	Blyth Valley	8	54	1	-	2	65
589	Bognor Regis and Littlehampton	2	8	2	-	9	21
356	Bolsover	15	18	5	-	4	42
434	Bolton North East	14	17	1	-	3	35
521	Bolton South East	6	14	3	-	5	28
559	Bolton West	4	12	2	1	5	24
489	Bootle	4	25	-	-	2	31
330	Boston and Skegness	15	19	7	-	4	45
476	Bosworth	6	17	2	-	7	32
434	Bournemouth East	16	13	1	-	5	35
489	Bournemouth West	11	16	3	-	1	31
421	Bracknell	9	15	2	-	10	36
434	Bradford North	6	27	-	2	-	35
600	Bradford South	4	14	-	-	2	20
128	Bradford West	26	41	12	-	2	81
569	Braintree	8	9	4	-	2	23
12	Brecon and Radnorshire	54	104	16	-	9	183
368	Brent East	18	20	1	-	1	40
654	Brent North	4	4	-	-	2	10
521	Brent South	6	20	-	-	2	28
211	Brentford and Isleworth	24	26	6	-	5	61
499	Brentwood and Ongar	9	10	2	-	9	30
277	Bridgend	13	29	2	-	8	52
86	Bridgwater	16	59	9	-	15	99
253	Brigg and Goole	5	39	4	1	6	55
330	Brighton, Kemptown	23	17	1	-	4	45
55	Brighton, Pavilion	71	39	9	-	1	120
137	Bristol East	21	56	-	-	2	79
253	Bristol North West	10	39	1	-	5	55
154	Bristol South	32	39	-	-	4	75
24	Bristol West	71	64	9	1	6	151
609	Bromley and Chislehurst	4	9	2	-	4	19
476	Bromsgrove	16	12	-	1	3	32
615	Broxbourne	1	9	-	-	8	18
513	Broxtowe	9	12	1	-	7	29
277	Buckingham	7	24	5	1	15	52
336	Burnley	15	16	5	-	8	44
296	Burton	21	21	1	-	6	49
513	Bury North	4	15	5	-	5	29
580	Bury South	4	11	2	-	5	22
181	Bury St. Edmunds	14	26	10	1	18	69
35	Caernarfon	55	65	7	1	11	139
226	Caerphilly	14	39	-	1	5	59
18	Caithness, Sutherland & Easter Ross	9	128	8	-	19	164
232	Calder Valley	24	20	3	-	11	58
201	Camberwell and Peckham	20	37	2	1	3	63
100	Cambridge	41	37	8	1	6	93
626	Cannock Chase	1	15	-	-	1	17
211	Canterbury	20	28	10	-	3	61
54	Cardiff Central	72	36	12	1	3	124
266	Cardiff North	16	33	2	-	2	53
42	Cardiff South and Penarth	65	49	8	2	10	134
28	Cardiff West	110	26	3	-	6	145
363	Carlisle	11	18	6	1	5	41

Table 11

Number of Lottery Awards by Constituency and Good Cause
Cumulative total to end June 1999

Rank ^(a)		Arts	Charities	Heritage	Millennium Commission	Sport	Total ^(b)
55	Carmarthen East and Dinefwr	34	67	8	1	10	120
40	Carmarthen West and South Pembrokeshire	35	61	15	1	24	136
47	Carrick, Cumnock & Doon Valley	3	114	3	-	8	128
651	Carshalton and Wallington	3	6	-	-	2	11
633	Castle Point	2	10	1	-	3	16
280	Central Fife	2	48	-	1	-	51
290	Central Suffolk and North Ipswich	15	17	6	-	12	50
10	Ceredigion	81	86	15	-	23	205
489	Charnwood	13	7	2	-	9	31
600	Chatham and Aylesford	4	9	1	-	6	20
615	Cheadle	6	7	1	-	4	18
266	Cheltenham	15	31	6	-	1	53
421	Chesham and Amersham	9	15	5	-	7	36
346	Chesterfield	10	31	2	-	-	43
280	Chichester	15	13	11	-	12	51
615	Chingford and Woodford Green	6	8	-	-	4	18
559	Chipping Barnet	12	7	1	-	4	24
434	Chorley	5	20	7	-	3	35
513	Christchurch	7	16	2	-	4	29
1	Cities of London and Westminster	165	133	67	7	1	376
266	City of Chester	25	18	6	-	4	53
134	City of Durham	17	48	8	2	5	80
154	City of York	19	40	12	1	3	75
521	Cleethorpes	4	19	2	-	3	28
61	Clwyd West	29	67	6	-	13	115
128	Clwyd South	25	47	5	-	4	81
321	Clydebank & Milngavie	5	37	-	-	4	46
81	Clydesdale	4	87	2	-	9	102
134	Coatbridge & Chryston	2	73	1	-	4	80
304	Colchester	17	24	3	-	4	48
246	Colne Valley	32	14	1	-	9	56
526	Congleton	11	10	1	-	5	27
61	Conwy	38	61	8	1	7	115
258	Copeland	15	27	2	2	8	54
449	Corby	14	12	3	-	5	34
104	Cotswold	17	51	5	1	17	91
321	Coventry North East	19	21	-	-	6	46
434	Coventry North West	18	15	-	-	2	35
171	Coventry South	31	32	6	1	2	72
589	Crawley	3	16	1	-	1	21
391	Crewe and Nantwich	12	17	3	-	6	38
526	Crosby	4	19	3	-	1	27
633	Croydon Central	5	8	1	1	1	16
521	Croydon North	9	18	-	1	-	28
633	Croydon South	3	10	1	-	2	16
315	Cumbernauld & Kilsyth	4	38	1	-	4	47
121	Cunninghame North	9	63	2	-	10	84
221	Cunninghame South	5	51	1	1	2	60
184	Cynon Valley	26	36	2	-	4	68
651	Dagenham	1	6	-	1	3	11
336	Darlington	12	26	4	1	1	44
499	Dartford	5	19	4	-	2	30
226	Daventry	9	23	9	1	17	59
174	Delyn	15	38	6	-	12	71
633	Denton and Reddish	4	10	-	-	2	16
232	Derby North	21	31	1	-	5	58
191	Derby South	15	42	4	-	5	66
76	Devizes	10	71	11	-	12	104

Table 11

Number of Lottery Awards by Constituency and Good Cause
Cumulative total to end June 1999

Rank ^(a)		Arts	Charities	Heritage	Millennium Commission	Sport	Total ^(b)
536	Dewsbury	12	7	1	-	6	26
589	Don Valley	7	11	-	1	2	21
368	Doncaster Central	8	19	5	-	8	40
645	Doncaster North	1	10	1	-	1	13
580	Dover	7	7	3	-	5	22
280	Dudley North	30	15	3	-	3	51
221	Dudley South	44	11	1	-	4	60
253	Dulwich and West Norwood	31	21	2	-	1	55
69	Dumbarton	4	91	5	1	5	106
26	Dumfries	15	113	4	-	14	146
434	Dundee East	-	29	3	-	3	35
174	Dundee West	20	42	6	1	2	71
121	Dunfermline East	11	64	1	-	8	84
137	Dunfermline West	7	68	2	-	2	79
626	Ealing North	6	9	-	1	1	17
321	Ealing, Acton and Shepherd's Bush	21	20	2	-	3	46
489	Ealing, Southall	15	13	2	-	1	31
296	Easington	9	36	3	-	1	49
346	East Antrim	6	20	2	1	14	43
232	East Devon	7	35	2	-	14	58
391	East Ham	9	23	1	-	5	38
336	East Hampshire	19	12	3	-	10	44
116	East Kilbride	3	74	1	-	7	85
191	East Londonderry	9	35	2	-	20	66
179	East Lothian	6	53	5	-	6	70
536	East Surrey	6	10	1	-	9	26
551	East Worthing and Shoreham	6	15	-	-	4	25
391	East Yorkshire	6	19	1	-	12	38
368	Eastbourne	11	20	4	-	5	40
315	Eastleigh	15	25	2	-	5	47
203	Eastwood	3	48	-	-	11	62
626	Eccles	1	13	1	1	1	17
421	Eddisbury	8	17	3	-	8	36
5	Edinburgh Central	82	99	45	2	2	230
191	Edinburgh East & Musselburgh	5	48	3	-	10	66
14	Edinburgh North & Leith	50	108	11	1	3	173
196	Edinburgh Pentlands	9	49	1	2	4	65
211	Edinburgh South	6	49	1	-	5	61
258	Edinburgh West	6	40	3	-	5	54
589	Edmonton	6	13	2	-	-	21
513	Ellesmere Port and Neston	9	16	2	-	2	29
449	Elmet	9	17	1	-	7	34
643	Eltham	3	6	3	-	2	14
633	Enfield North	3	4	6	-	3	16
589	Enfield, Southgate	10	7	-	-	4	21
600	Epping Forest	1	13	2	-	4	20
626	Epsom and Ewell	4	8	-	-	5	17
526	Erewash	5	16	1	-	5	27
569	Erith and Thamesmead	4	15	1	-	3	23
551	Esher and Walton	9	6	2	-	8	25
67	Exeter	34	61	10	1	2	108
258	Falkirk East	6	46	-	-	2	54
321	Falkirk West	3	40	2	-	1	46
82	Falmouth and Camborne	15	69	14	-	3	101
589	Fareham	5	8	-	1	7	21
449	Faversham and Mid Kent	4	13	10	-	7	34
526	Feltham and Heston	8	15	1	-	3	27
30	Fermanagh and South Tyrone	31	57	13	2	41	144

Table 11

Number of Lottery Awards by Constituency and Good Cause
Cumulative total to end June 1999

Rank ^(a)		Arts	Charities	Heritage	Millennium Commission	Sport	Total ^(b)
404	Finchley and Golders Green	18	13	1	-	5	37
363	Folkestone and Hythe	9	19	6	1	6	41
88	Forest of Dean	15	67	2	-	14	98
51	Foyle	33	74	4	1	14	126
589	Fylde	4	5	-	-	12	21
368	Gainsborough	15	16	5	-	4	40
14	Galloway & Upper Nithsdale	9	141	6	1	16	173
266	Gateshead East and Washington West	11	41	1	-	-	53
569	Gedling	12	5	1	-	5	23
633	Gillingham	4	8	1	-	3	16
363	Glasgow Anniesland	2	32	1	-	6	41
391	Glasgow Baillieston	4	30	-	-	4	38
346	Glasgow Cathcart	3	34	-	1	5	43
104	Glasgow Govan	23	57	5	-	6	91
4	Glasgow Kelvin	114	93	17	5	6	235
147	Glasgow Maryhill	13	56	2	1	4	76
382	Glasgow Pollok	1	37	-	-	1	39
199	Glasgow Rutherglen	3	58	-	-	3	64
154	Glasgow Shettleston	11	47	6	-	11	75
290	Glasgow Springburn	11	37	2	-	-	50
104	Gloucester	11	65	7	-	8	91
109	Gordon	4	68	1	1	15	89
559	Gosport	9	11	4	-	-	24
88	Gower	30	47	4	-	17	98
499	Grantham and Stamford	7	10	2	2	9	30
536	Gravesham	6	12	3	-	5	26
336	Great Grimsby	9	28	4	-	3	44
499	Great Yarmouth	8	14	3	-	5	30
315	Greenock & Inverclyde	3	40	-	-	4	47
104	Greenwich and Woolwich	38	36	14	-	3	91
346	Guildford	18	13	2	-	10	43
109	Hackney North and Stoke Newington	43	42	1	-	3	89
22	Hackney South and Shoreditch	72	68	9	1	2	152
382	Halesowen and Rowley Regis	24	9	1	-	5	39
258	Halifax	19	20	9	-	6	54
434	Haltemprice and Howden	8	18	3	-	6	35
404	Halton	5	25	4	-	3	37
280	Hamilton North & Bellshill	11	32	4	-	4	51
203	Hamilton South	3	58	-	-	1	62
71	Hammersmith and Fulham	41	57	-	1	6	105
162	Hampstead and Highgate	36	26	11	-	1	74
476	Harborough	10	11	3	1	7	32
559	Harlow	5	11	2	-	6	24
238	Harrogate and Knaresborough	17	33	2	-	5	57
615	Harrow East	6	8	1	-	3	18
559	Harrow West	7	12	2	-	3	24
162	Hartlepool	13	51	5	-	5	74
468	Harwich	7	14	4	-	8	33
147	Hastings and Rye	25	38	7	-	6	76
499	Havant	10	14	1	-	5	30
658	Hayes and Harlington	-	5	1	-	1	7
536	Hazel Grove	9	8	1	-	8	26
526	Hemel Hempstead	5	13	2	-	7	27
363	Hemsworth	14	14	4	-	9	41
569	Hendon	7	12	2	-	2	23
321	Henley	8	15	8	-	15	46
125	Hereford	35	38	5	-	5	83
536	Hertford and Stortford	5	8	2	-	11	26

Table 11

Number of Lottery Awards by Constituency and Good Cause
Cumulative total to end June 1999

Rank ^(a)		Arts	Charities	Heritage	Millennium Commission	Sport	Total ^(b)
569	Hertsmere	5	10	1	-	7	23
39	Hexham	23	87	10	1	16	137
368	Heywood and Middleton	9	23	4	1	3	40
189	High Peak	26	16	9	-	16	67
499	Hitchin and Harpenden	12	10	-	-	8	30
2	Holborn and St. Pancras	156	144	25	5	2	332
648	Hornchurch	4	4	-	-	4	12
108	Hornsey and Wood Green	57	23	5	-	5	90
449	Horsham	16	9	3	-	6	34
391	Houghton and Washington East	4	31	1	-	2	38
238	Hove	30	21	2	-	4	57
184	Huddersfield	39	18	5	-	6	68
321	Huntingdon	12	14	8	1	11	46
551	Hyndburn	5	14	1	1	4	25
615	Ilford North	5	7	-	-	6	18
551	Ilford South	2	19	2	-	2	25
21	Inverness East, Nairn & Lochaber	21	109	4	2	25	161
304	Ipswich	11	23	9	1	4	48
128	Isle of Wight	27	31	3	1	19	81
41	Islington North	66	63	4	1	1	135
3	Islington South and Finsbury	91	170	8	7	4	280
211	Islwyn	23	31	3	-	4	61
296	Jarrow	9	33	4	-	3	49
258	Keighley	24	18	5	-	7	54
113	Kensington and Chelsea	38	33	15	1	-	87
346	Kettering	13	18	3	-	9	43
121	Kilmarnock & Loudoun	2	80	1	-	1	84
569	Kingston and Surbiton	5	8	3	-	7	23
580	Kingston upon Hull East	3	18	1	-	-	22
434	Kingston upon Hull North	17	15	1	-	2	35
169	Kingston upon Hull West and Hessle	19	43	8	1	2	73
404	Kingswood	15	20	1	-	1	37
266	Kirkcaldy	2	49	2	-	-	53
536	Knowsley North and Sefton East	4	20	1	-	1	26
589	Knowsley South	5	13	2	-	1	21
296	Lagan Valley	14	12	4	-	19	49
232	Lancaster and Wyre	21	20	7	1	9	58
57	Leeds Central	39	66	8	1	5	119
434	Leeds East	15	16	3	-	1	35
391	Leeds North East	18	17	2	-	1	38
304	Leeds North West	24	17	2	1	4	48
368	Leeds West	17	18	4	-	1	40
499	Leicester East	11	16	-	-	3	30
67	Leicester South	41	57	6	1	3	108
315	Leicester West	16	27	1	-	3	47
600	Leigh	6	10	2	-	2	20
92	Leominster	36	37	10	-	13	96
121	Lewes	29	33	10	-	12	84
559	Lewisham East	10	9	4	-	1	24
356	Lewisham West	8	25	6	-	3	42
154	Lewisham, Deptford	40	31	3	-	1	75
382	Leyton and Wanstead	13	17	2	-	7	39
449	Lichfield	13	13	4	-	4	34
346	Lincoln	16	18	5	-	4	43
147	Linlithgow	7	61	3	-	5	76
391	Liverpool, Garston	7	26	2	1	2	38
7	Liverpool, Riverside	83	110	16	5	4	218
468	Liverpool, Walton	5	26	1	-	1	33

Table 11

Number of Lottery Awards by Constituency and Good Cause
Cumulative total to end June 1999

Rank ^(a)		Arts	Charities	Heritage	Millennium Commission	Sport	Total ^(b)
468	Liverpool, Wavertree	6	26	-	-	1	33
449	Liverpool, West Derby	1	31	-	1	1	34
128	Livingston	4	69	1	1	6	81
162	Llanelli	23	41	-	1	9	74
421	Loughborough	16	9	3	-	8	36
266	Louth and Horncastle	12	21	12	-	8	53
60	Ludlow	62	27	12	-	16	117
643	Luton North	8	5	-	-	1	14
499	Luton South	8	19	1	-	2	30
346	Macclesfield	19	12	3	1	8	43
404	Maidenhead	14	12	1	-	10	37
266	Maidstone and The Weald	9	24	9	1	10	53
633	Makerfield	3	11	-	-	2	16
330	Maldon and East Chelmsford	12	19	5	1	8	45
489	Manchester, Blackley	8	19	3	-	1	31
8	Manchester, Central	90	91	21	3	6	211
449	Manchester, Gorton	16	16	-	-	2	34
221	Manchester, Withington	34	24	-	-	2	60
246	Mansfield	16	25	8	-	7	56
356	Medway	10	13	16	-	3	42
47	Meirionnydd Nant Conwy	47	62	12	1	6	128
559	Meriden	8	11	2	-	3	24
162	Merthyr Tydfil and Rhymney	19	45	3	-	7	74
476	Mid Bedfordshire	13	8	5	-	6	32
382	Mid Dorset and North Poole	8	17	6	-	8	39
356	Mid Norfolk	14	18	3	-	7	42
489	Mid Sussex	10	12	2	1	6	31
277	Mid Worcestershire	16	25	4	-	7	52
92	Middlesbrough	17	71	4	1	3	96
246	Middlesbrough South and East Cleveland	12	35	2	-	7	56
113	Midlothian	4	67	12	-	4	87
76	Mid-Ulster	19	35	7	2	41	104
404	Milton Keynes South West	13	21	-	-	3	37
609	Mitcham and Morden	4	13	1	-	1	19
476	Mole Valley	12	9	1	-	10	32
71	Monmouth	29	49	13	-	14	105
9	Montgomeryshire	93	90	8	-	16	207
96	Moray	8	71	4	-	12	95
336	Morecambe and Lunesdale	5	29	1	-	9	44
609	Morley and Rothwell	8	8	1	-	2	19
203	Motherwell & Wishaw	3	56	1	-	2	62
134	Neath	33	34	3	-	10	80
391	New Forest East	5	16	4	-	13	38
304	New Forest West	20	15	2	-	11	48
336	Newark	12	20	4	-	8	44
404	Newbury	7	19	3	-	8	37
35	Newcastle upon Tyne Central	53	76	6	-	4	139
154	Newcastle upon Tyne East and Wallsend	20	51	3	-	1	75
290	Newcastle upon Tyne North	11	34	3	-	2	50
476	Newcastle-under-Lyme	11	15	1	-	5	32
434	Newport East	13	17	-	-	5	35
184	Newport West	26	21	8	-	13	68
47	Newry and Armagh	31	51	10	-	36	128
615	Normanton	7	8	-	-	3	18
174	North Antrim	13	29	6	1	22	71
64	North Cornwall	16	79	7	-	11	113
33	North Devon	17	109	6	-	9	141
82	North Dorset	27	58	6	-	10	101

Table 11

Number of Lottery Awards by Constituency and Good Cause
Cumulative total to end June 1999

Rank ^(a)		Arts	Charities	Heritage	Millennium Commission	Sport	Total ^(b)
290	North Down	16	12	7	-	15	50
147	North Durham	9	62	1	-	4	76
476	North East Bedfordshire	8	12	5	-	7	32
321	North East Cambridgeshire	12	21	5	1	7	46
489	North East Derbyshire	8	18	3	-	2	31
112	North East Fife	7	61	11	-	9	88
499	North East Hampshire	6	14	2	-	8	30
526	North East Hertfordshire	3	12	4	-	8	27
449	North East Milton Keynes	14	13	-	2	5	34
404	North Essex	8	16	5	2	6	37
246	North Norfolk	19	18	9	-	10	56
258	North Shropshire	15	26	7	1	5	54
35	North Southwark and Bermondsey	54	77	6	2	-	139
526	North Swindon	3	17	4	-	3	27
84	North Tayside	7	78	6	-	9	100
449	North Thanet	7	16	6	-	5	34
280	North Tyneside	7	40	1	-	3	51
304	North Warwickshire	17	24	2	-	5	48
434	North West Cambridgeshire	9	17	4	-	5	35
57	North West Durham	30	79	4	-	6	119
382	North West Hampshire	14	16	2	-	7	39
391	North West Leicestershire	8	16	6	1	7	38
382	North West Norfolk	12	18	4	1	4	39
191	North Wiltshire	11	37	6	-	12	66
476	Northampton North	11	17	-	-	4	32
171	Northampton South	19	40	6	-	7	72
203	Northavon	15	33	3	-	11	62
551	Norwich North	12	9	-	-	4	25
50	Norwich South	53	60	11	2	1	127
79	Nottingham East	54	42	4	-	3	103
589	Nottingham North	2	17	-	1	1	21
71	Nottingham South	44	50	6	-	5	105
434	Nuneaton	6	24	3	-	2	35
69	Ochil	11	79	7	-	9	106
304	Ogmore	18	25	1	-	4	48
580	Old Bexley and Sidcup	5	11	1	-	5	22
404	Oldham East and Saddleworth	9	18	3	-	7	37
368	Oldham West and Royton	8	26	4	-	2	40
46	Orkney & Shetland	16	90	14	1	8	129
609	Orpington	6	7	2	-	4	19
174	Oxford East	27	41	-	-	3	71
92	Oxford West and Abingdon	37	35	8	4	12	96
330	Paisley North	2	40	-	-	3	45
321	Paisley South	5	40	1	-	-	46
551	Pendle	5	11	3	-	6	25
141	Penrith and The Border	26	29	7	1	15	78
96	Perth	7	70	9	-	9	95
280	Peterborough	14	25	6	2	4	51
199	Plymouth, Devonport	6	54	1	-	3	64
113	Plymouth, Sutton	14	62	4	-	7	87
580	Pontefract and Castleford	7	8	1	-	6	22
100	Pontypridd	28	58	1	-	6	93
404	Poole	16	17	2	-	2	37
179	Poplar and Canning Town	15	42	10	1	2	70
536	Portsmouth North	7	12	1	-	6	26
211	Portsmouth South	26	22	9	1	3	61
33	Preseli Pembrokeshire	48	57	14	-	22	141
221	Preston	9	38	10	1	2	60

Table 11

Number of Lottery Awards by Constituency and Good Cause
Cumulative total to end June 1999

Rank ^(a)		Arts	Charities	Heritage	Millennium Commission	Sport	Total ^(b)
580	Pudsey	9	6	-	-	7	22
536	Putney	12	9	3	-	2	26
645	Rayleigh	3	7	2	-	1	13
154	Reading East	31	37	3	1	3	75
536	Reading West	9	17	-	-	-	26
304	Redcar	3	41	1	-	3	48
449	Redditch	7	24	1	-	2	34
24	Regent's Park and Kensington North	53	85	5	1	7	151
615	Reigate	4	8	1	-	5	18
79	Rhondda	34	61	3	-	5	103
468	Ribble Valley	6	17	2	-	8	33
174	Richmond (Yorks)	16	31	10	1	13	71
246	Richmond Park	14	27	5	2	8	56
238	Rochdale	12	34	5	-	6	57
569	Rochford and Southend East	7	9	2	-	5	23
651	Romford	3	7	-	-	1	11
434	Romsey	15	15	1	1	3	35
16	Ross, Skye & Inverness West	22	114	7	1	26	170
526	Rossendale and Darwen	8	10	4	-	5	27
404	Rother Valley	9	25	-	-	3	37
330	Rotherham	15	21	5	1	3	45
125	Roxburgh & Berwickshire	1	64	1	-	17	83
356	Rugby and Kenilworth	9	24	2	1	6	42
645	Ruislip-Northwood	6	3	-	-	4	13
600	Runnymede and Weybridge	9	4	5	1	1	20
221	Rushcliffe	22	16	3	2	17	60
266	Rutland and Melton	12	22	5	-	14	53
184	Ryedale	20	27	10	-	11	68
368	Saffron Walden	5	18	6	-	11	40
258	Salford	13	32	4	-	5	54
116	Salisbury	34	40	4	-	7	85
137	Scarborough and Whitby	13	40	13	-	13	79
468	Scunthorpe	6	22	1	-	4	33
226	Sedgefield	7	47	1	-	4	59
280	Selby	7	24	6	-	14	51
421	Sevenoaks	10	21	2	-	3	36
6	Sheffield Central	118	95	5	2	2	222
615	Sheffield, Attercliffe	5	10	1	-	2	18
521	Sheffield, Brightside	4	21	-	-	3	28
280	Sheffield, Hallam	25	20	-	-	6	51
304	Sheffield, Heeley	19	23	4	-	2	48
368	Sheffield, Hillsborough	13	21	5	-	1	40
346	Sherwood	13	24	2	-	4	43
489	Shipley	8	19	3	-	1	31
71	Shrewsbury and Atcham	46	46	7	1	5	105
642	Sittingbourne and Sheppey	2	9	-	-	4	15
137	Skipton and Ripon	35	20	10	3	11	79
404	Sleaford and North Hykeham	15	15	3	1	3	37
404	Slough	16	19	-	-	2	37
449	Solihull	13	16	1	-	4	34
100	Somerton and Frome	22	51	10	-	10	93
321	South Antrim	8	14	5	-	19	46
203	South Cambridgeshire	22	17	11	1	11	62
421	South Derbyshire	11	13	4	-	8	36
145	South Dorset	11	46	7	-	13	77
141	South Down	12	27	9	2	28	78
246	South East Cambridgeshire	17	20	7	1	11	56
64	South East Cornwall	15	76	8	1	13	113

Table 11

Number of Lottery Awards by Constituency and Good Cause
Cumulative total to end June 1999

Rank ^(a)		Arts	Charities	Heritage	Millennium Commission	Sport	Total ^(b)
476	South Holland and The Deepings	12	13	2	-	5	32
246	South Norfolk	19	23	3	1	10	56
569	South Ribble	4	11	1	1	6	23
368	South Shields	5	29	3	1	2	40
536	South Staffordshire	8	12	2	-	4	26
238	South Suffolk	13	18	13	-	13	57
171	South Swindon	16	51	3	-	2	72
404	South Thanet	11	12	7	-	7	37
499	South West Bedfordshire	12	8	4	-	6	30
226	South West Devon	6	49	1	-	3	59
513	South West Hertfordshire	7	8	3	-	11	29
336	South West Norfolk	7	20	13	-	4	44
238	South West Surrey	22	14	5	2	14	57
266	Southampton, Itchen	21	26	4	-	2	53
468	Southampton, Test	15	14	-	-	4	33
654	Southend West	5	4	-	-	1	10
589	Southport	3	9	5	-	4	21
609	Spelthorne	4	11	-	-	4	19
559	St. Albans	8	9	2	-	5	24
476	St. Helens North	11	17	-	-	4	32
513	St. Helens South	5	16	4	-	4	29
38	St. Ives	26	84	10	-	18	138
296	Stafford	3	36	8	-	2	49
476	Staffordshire Moorlands	4	17	5	-	6	32
421	Stalybridge and Hyde	14	14	2	-	6	36
600	Stevenage	7	9	1	-	3	20
63	Stirling	16	81	4	-	13	114
336	Stockport	6	23	8	-	7	44
391	Stockton North	8	28	-	-	2	38
449	Stockton South	5	23	1	-	5	34
304	Stoke-on-Trent Central	12	29	4	-	3	48
600	Stoke-on-Trent North	3	9	3	1	4	20
615	Stoke-on-Trent South	2	9	3	-	4	18
421	Stone	5	14	7	1	9	36
266	Stourbridge	41	9	2	-	1	53
290	Strangford	17	19	-	-	14	50
162	Stratford-on-Avon	35	24	2	-	13	74
99	Strathkelvin & Bearsden	-	89	-	-	5	94
211	Streatham	30	26	3	1	1	61
434	Stretford and Urmston	8	26	-	-	1	35
71	Stroud	28	53	7	1	16	105
147	Suffolk Coastal	26	22	11	-	17	76
346	Sunderland North	10	29	2	-	2	43
421	Sunderland South	4	25	3	-	4	36
569	Surrey Heath	8	8	1	-	6	23
609	Sutton and Cheam	4	14	-	-	1	19
569	Sutton Coldfield	11	5	-	-	7	23
258	Swansea East	23	26	1	-	4	54
84	Swansea West	35	53	3	1	8	100
600	Tamworth	9	8	1	-	2	20
513	Tatton	11	10	4	-	4	29
66	Taunton	22	63	12	-	15	112
51	Teignbridge	33	80	1	-	12	126
201	Telford	29	24	5	-	5	63
280	Tewkesbury	2	41	4	-	4	51
296	The Wrekin	23	17	3	-	6	49
626	Thurrock	3	11	1	-	2	17
44	Tiverton and Honiton	19	95	4	-	13	131

Table 11

Number of Lottery Awards by Constituency and Good Cause
Cumulative total to end June 1999

Rank ^(a)		Arts	Charities	Heritage	Millennium Commission	Sport	Total ^(b)
489	Tonbridge and Malling	7	14	4	-	6	31
330	Tooting	17	25	-	1	2	45
449	Torbay	2	28	2	-	2	34
162	Torfaen	22	41	4	-	7	74
20	Torrige and West Devon	32	100	15	-	15	162
32	Totnes	34	85	6	-	17	142
203	Tottenham	22	35	4	-	1	62
44	Truro and St. Austell	24	77	8	2	20	131
296	Tunbridge Wells	20	15	3	1	10	49
92	Tweeddale, Ettrick & Lauderdale	6	74	5	-	11	96
499	Twickenham	14	7	5	-	4	30
28	Tyne Bridge	41	92	6	3	3	145
154	Tynemouth	17	48	4	-	6	75
648	Upminster	-	7	-	-	5	12
141	Upper Bann	13	42	1	2	20	78
654	Uxbridge	2	8	-	-	-	10
147	Vale of Clwyd	27	42	2	-	5	76
127	Vale of Glamorgan	30	29	8	1	14	82
203	Vale of York	14	18	9	1	20	62
17	Vauxhall	68	92	7	1	-	168
253	Wakefield	23	16	9	-	7	55
489	Wallasey	5	21	4	-	1	31
513	Walsall North	15	13	1	-	-	29
226	Walsall South	21	27	4	-	7	59
499	Walthamstow	13	14	1	-	2	30
128	Wansbeck	10	65	3	-	3	81
162	Wansdyke	18	42	3	-	11	74
336	Wantage	15	14	6	1	8	44
404	Warley	15	19	-	1	2	37
468	Warrington North	4	22	1	-	6	33
421	Warrington South	6	15	2	-	13	36
109	Warwick and Leamington	38	42	3	-	6	89
476	Watford	6	17	2	-	7	32
296	Waveney	11	25	6	-	7	49
232	Wealden	18	16	5	-	19	58
382	Weaver Vale	12	22	2	-	3	39
368	Wellingborough	11	21	1	-	7	40
141	Wells	17	42	7	-	12	78
536	Welwyn Hatfield	6	13	1	-	6	26
580	Wentworth	7	12	1	-	2	22
88	West Aberdeenshire & Kincardine	12	62	7	-	17	98
449	West Bromwich East	10	21	2	-	1	34
315	West Bromwich West	18	22	2	-	5	47
476	West Chelmsford	8	19	2	-	3	32
145	West Derbyshire	30	25	10	3	9	77
22	West Dorset	27	95	18	-	12	152
189	West Ham	14	45	3	1	4	67
391	West Lancashire	7	26	-	-	5	38
238	West Renfrewshire	3	49	1	-	4	57
382	West Suffolk	7	14	9	1	8	39
76	West Tyrone	14	54	6	1	29	104
232	West Worcestershire	25	19	7	-	7	58
181	Westbury	9	47	5	-	8	69
86	Western Isles	14	71	5	1	8	99
116	Westmorland and Lonsdale	25	36	15	-	9	85
304	Weston-Super-Mare	4	35	5	-	4	48
421	Wigan	5	22	2	-	7	36
449	Wimbledon	18	8	7	-	1	34

Table 11

Number of Lottery Awards by Constituency and Good Cause
Cumulative total to end June 1999

Rank ^(a)		Arts	Charities	Heritage	Millennium Commission	Sport	Total ^(b)
88	Winchester	35	33	10	3	17	98
526	Windsor	7	14	1	-	5	27
626	Wirral South	4	13	-	-	-	17
600	Wirral West	5	12	-	-	3	20
238	Witney	17	19	5	-	16	57
336	Woking	10	17	3	-	14	44
559	Wokingham	6	12	2	-	4	24
580	Wolverhampton North East	4	17	1	-	-	22
536	Wolverhampton South East	7	16	2	-	1	26
116	Wolverhampton South West	37	36	7	-	5	85
346	Woodspring	8	23	4	-	8	43
169	Worcester	33	33	4	-	3	73
226	Workington	9	32	5	-	13	59
615	Worsley	5	8	2	-	3	18
580	Worthing West	5	9	2	-	6	22
203	Wrexham	19	33	3	-	7	62
368	Wycombe	12	22	-	-	6	40
421	Wyre Forest	15	14	3	-	4	36
499	Wythenshawe and Sale East	5	20	1	-	4	30
184	Yeovil	12	45	3	-	8	68
59	Ynys Mon	41	59	6	-	12	118
	Constituency average	16	31	4	0	6	58

Notes: (a) Ranked from highest to lowest on basis of number of awards allocated to bodies in the constituency
(b) £200 million to NESTA

Sources: *Department of Culture, Media and Sport (Awards Database)*

Table 12

Value of Lottery Awards by Constituency and Good Cause

Cumulative total to end June 1999

£ thousands

Rank ^(a)		Arts	Charities	Heritage	Millennium Commission	Sport	Total ^(b)
456	Aberavon	285	1,081	272	-	703	2,342
237	Aberdeen Central	1,245	3,451	347	-	303	5,346
571	Aberdeen North	79	299	59	-	954	1,389
483	Aberdeen South	36	96	507	-	1,543	2,182
548	Airdrie & Shotts	42	906	20	-	619	1,587
492	Aldershot	30	277	187	174	1,441	2,108
621	Aldridge-Brownhills	116	689	51	-	31	888
577	Altrincham and Sale West	708	370	225	-	40	1,343
522	Alyn and Deeside	167	587	247	-	880	1,881
448	Amber Valley	151	1,378	765	-	138	2,432
341	Angus	454	1,129	87	-	2,097	3,768
250	Argyll & Bute	325	1,454	1,629	-	1,761	5,169
379	Arundel and South Downs	374	517	958	-	1,432	3,281
564	Ashfield	102	1,293	29	-	-	1,423
233	Ashford	215	783	1,115	975	2,308	5,396
56	Ashton under Lyne	117	2,048	2,047	14,851	102	19,166
402	Aylesbury	55	1,130	363	168	1,343	3,060
409	Ayr	710	1,195	320	-	704	2,928
216	Banbury	135	1,706	3,059	137	677	5,715
578	Banff & Buchan	86	299	87	-	869	1,341
178	Barking	4,103	648	-	-	2,133	6,883
175	Barnsley Central	406	1,003	241	5,330	19	6,999
602	Barnsley East and Mexborough	8	895	122	-	84	1,109
533	Barnsley West and Penistone	243	573	472	-	418	1,707
158	Barrow and Furness	2,640	1,645	2,179	-	1,496	7,960
568	Basildon	14	838	136	329	86	1,403
511	Basingstoke	1,039	346	13	139	399	1,936
363	Bassetlaw	174	1,320	24	1,772	142	3,431
73	Bath	1,689	1,812	1,340	7,775	3,117	15,733
436	Batley and Spen	380	1,489	20	-	683	2,571
90	Battersea	1,602	1,110	7,125	821	2,435	13,093
112	Beaconsfield	7,741	501	792	-	1,619	10,653
142	Beckenham	817	1,403	2,764	-	3,913	8,897
182	Bedford	515	2,350	262	2,436	1,124	6,687
167	Belfast East	403	1,554	2,516	-	2,943	7,415
15	Belfast North	1,139	6,674	2,550	46,797	699	57,861
67	Belfast South	3,317	8,094	2,364	634	1,962	16,370
44	Belfast West	3,004	8,006	7,544	4,955	966	24,475
218	Berwick-upon-Tweed	456	1,473	1,764	-	1,971	5,664
37	Bethnal Green and Bow	6,395	11,301	7,621	345	2,494	28,155
326	Beverley and Holderness	1,096	1,092	358	-	1,396	3,941
560	Bexhill and Battle	260	633	142	-	430	1,465
647	Bexleyheath and Crayford	189	222	81	-	64	556
639	Billericay	208	395	-	-	21	623
267	Birkenhead	23	3,546	377	-	873	4,819
187	Birmingham, Edgbaston	761	1,418	2,541	-	1,787	6,506
615	Birmingham, Erdington	298	442	-	197	-	937
657	Birmingham, Hall Green	129	197	-	-	74	400
625	Birmingham, Hodge Hill	5	50	20	-	793	869
4	Birmingham, Ladywood	42,202	10,166	4,517	73,500	258	130,644
641	Birmingham, Northfield	25	577	-	-	-	601
317	Birmingham, Perry Barr	227	2,245	105	-	1,459	4,035
344	Birmingham, Selly Oak	1,259	1,980	-	394	104	3,737
155	Birmingham, Sparkbrook and Small Heath	795	3,174	2,250	-	1,804	8,023
606	Birmingham, Yardley	131	891	25	-	17	1,064
264	Bishop Auckland	515	1,914	537	-	1,878	4,845
600	Blaby	151	516	40	-	419	1,126
385	Blackburn	251	2,220	181	-	565	3,217

Table 12

Value of Lottery Awards by Constituency and Good Cause

Cumulative total to end June 1999

£ thousands

Rank ^(a)		Arts	Charities	Heritage	Millennium Commission	Sport	Total ^(b)
618	Blackpool North and Fleetwood	21	239	42	-	615	917
393	Blackpool South	784	1,070	98	-	1,175	3,127
486	Blaenau Gwent	1,044	931	95	-	92	2,162
425	Blaydon	57	438	657	499	1,060	2,711
472	Blyth Valley	977	1,076	26	-	171	2,250
279	Bognor Regis and Littlehampton	10	620	511	-	3,548	4,689
461	Bolsover	221	454	1,443	-	186	2,304
208	Bolton North East	2,282	1,559	1,020	-	1,016	5,877
536	Bolton South East	56	994	275	-	360	1,684
74	Bolton West	10	651	219	404	14,062	15,346
514	Bootle	16	1,850	-	-	57	1,923
345	Boston and Skegness	158	1,016	1,933	-	581	3,687
494	Bosworth	44	1,481	45	-	525	2,096
383	Bournemouth East	256	648	103	-	2,216	3,224
389	Bournemouth West	300	885	1,972	-	12	3,168
534	Bracknell	192	725	112	-	672	1,701
200	Bradford North	439	2,283	-	3,458	-	6,181
579	Bradford South	16	1,256	-	-	67	1,339
46	Bradford West	6,756	5,008	10,770	-	471	23,005
565	Braintree	58	797	318	-	250	1,423
159	Brecon and Radnorshire	3,443	2,601	1,532	-	298	7,875
258	Brent East	3,026	1,919	10	-	10	4,965
659	Brent North	21	235	-	-	27	283
5	Brent South	1,045	2,192	-	-	120,038	123,275
164	Brentford and Isleworth	1,859	2,732	2,383	-	649	7,622
530	Brentwood and Ongar	297	756	61	-	624	1,739
424	Bridgend	439	1,000	639	-	635	2,712
373	Bridgwater	190	688	1,344	-	1,088	3,310
325	Brigg and Goole	57	1,504	473	462	1,455	3,951
62	Brighton, Kempdown	15,757	1,107	63	-	570	17,498
39	Brighton, Pavilion	2,703	3,131	20,747	-	10	26,592
251	Bristol East	535	3,997	-	-	613	5,145
242	Bristol North West	96	1,139	754	-	3,291	5,281
357	Bristol South	491	2,176	-	-	834	3,501
11	Bristol West	10,079	5,688	5,399	43,500	2,558	67,225
542	Bromley and Chislehurst	194	521	26	-	906	1,647
238	Bromsgrove	129	964	-	3,308	926	5,326
212	Broxbourne	4	680	-	-	5,084	5,768
629	Broxtowe	38	294	80	-	396	808
153	Buckingham	89	1,093	6,179	120	564	8,045
332	Burnley	375	1,287	184	-	2,047	3,894
487	Burton	579	1,361	45	-	175	2,160
249	Bury North	2,331	1,104	1,164	-	581	5,180
523	Bury South	79	663	310	-	829	1,881
115	Bury St. Edmunds	550	1,851	1,233	5,152	1,783	10,569
75	Caernarfon	2,695	2,565	3,390	4,300	2,139	15,089
294	Caerphilly	192	1,830	-	1,371	1,013	4,406
296	Caithness, Sutherland & Easter Ross	885	1,405	1,414	-	652	4,357
156	Calder Valley	892	1,144	414	-	5,553	8,003
58	Camberwell and Peckham	506	5,139	993	7,053	4,709	18,399
31	Cambridge	9,257	3,486	17,198	331	8,230	38,501
644	Cannock Chase	48	528	-	-	10	587
118	Canterbury	334	1,891	4,774	-	3,293	10,293
14	Cardiff Central	8,011	2,293	2,387	46,000	57	58,748
400	Cardiff North	702	2,218	100	-	48	3,068
21	Cardiff South and Penarth	11,690	2,787	5,887	27,365	1,620	49,350
61	Cardiff West	6,166	1,483	210	-	10,006	17,864
128	Carlisle	639	2,394	2,358	3,182	1,369	9,943

Table 12

Value of Lottery Awards by Constituency and Good Cause

Cumulative total to end June 1999

£ thousands

Rank ^(a)		Arts	Charities	Heritage	Millennium Commission	Sport	Total ^(b)
41	Carmarthen East and Dinefwr	512	1,621	1,144	21,700	510	25,486
207	Carmarthen West and South Pembrokeshire	870	2,376	979	131	1,526	5,883
388	Carrick, Cumnock & Doon Valley	69	865	1,836	-	406	3,175
646	Carshalton and Wallington	16	165	-	-	391	571
622	Castle Point	50	502	15	-	314	882
502	Central Fife	11	238	-	1,793	-	2,043
263	Central Suffolk and North Ipswich	1,053	1,261	1,892	-	644	4,849
120	Ceredigion	4,317	2,975	1,516	-	1,363	10,171
632	Charnwood	172	193	61	-	335	762
443	Chatham and Aylesford	20	384	183	-	1,921	2,508
559	Cheadle	174	812	37	-	453	1,476
346	Cheltenham	1,367	1,094	1,144	-	69	3,674
377	Chesham and Amersham	38	2,076	487	-	694	3,295
408	Chesterfield	144	2,666	125	-	-	2,935
273	Chichester	286	815	2,554	-	1,081	4,736
588	Chingford and Woodford Green	304	240	-	-	733	1,278
442	Chipping Barnet	244	458	1,645	-	166	2,512
547	Chorley	23	769	667	-	139	1,599
339	Christchurch	399	388	2,670	-	327	3,784
1	Cities of London and Westminster	180,163	20,358	137,279	515,426	24	1,053,250
338	City of Chester	624	1,415	971	-	792	3,802
49	City of Durham	368	2,270	1,381	17,099	595	21,713
71	City of York	4,263	3,459	5,854	2,112	137	15,825
603	Cleethorpes	332	440	137	-	198	1,107
353	Clwyd West	608	1,076	528	-	1,330	3,543
271	Clwyd South	2,871	899	588	-	394	4,752
599	Clydebank & Milngavie	38	517	-	-	575	1,129
245	Clydesdale	47	1,190	2,114	-	1,887	5,237
567	Coatbridge & Chryston	313	1,016	33	-	42	1,404
299	Colchester	1,236	2,081	418	-	603	4,338
376	Colne Valley	307	482	60	-	2,451	3,299
549	Congleton	286	531	14	-	741	1,571
77	Conwy	770	3,024	4,137	5,656	1,164	14,751
96	Copeland	592	2,181	308	8,069	875	12,025
303	Corby	368	887	462	-	2,587	4,304
83	Cotswold	336	2,603	401	10,100	572	14,011
275	Coventry North East	326	2,057	-	-	2,328	4,711
516	Coventry North West	818	965	-	-	127	1,910
51	Coventry South	4,779	3,531	1,606	10,280	637	20,832
597	Crawley	15	936	135	-	70	1,156
450	Crewe and Nantwich	272	1,207	225	-	722	2,426
554	Crosby	93	1,009	327	-	84	1,513
381	Croydon Central	63	694	218	2,078	189	3,242
283	Croydon North	39	2,318	-	2,215	-	4,572
627	Croydon South	15	499	29	-	320	863
546	Cumbernauld & Kilsyth	242	482	684	-	205	1,614
403	Cunninghame North	839	698	228	-	1,268	3,033
205	Cunninghame South	160	343	10	5,340	118	5,971
268	Cynon Valley	2,491	1,311	365	-	637	4,804
619	Dagenham	5	220	-	360	320	906
329	Darlington	755	704	385	434	1,632	3,910
349	Dartford	1,813	1,267	311	-	249	3,640
235	Daventry	36	796	1,946	551	2,055	5,383
318	Delyn	906	538	774	-	1,804	4,022
645	Denton and Reddish	20	512	-	-	47	579
257	Derby North	1,927	2,559	13	-	515	5,015
228	Derby South	655	3,487	480	-	868	5,491
35	Devizes	223	1,787	26,403	-	1,105	29,518

Table 12

Value of Lottery Awards by Constituency and Good Cause

Cumulative total to end June 1999

£ thousands

Rank ^(a)		Arts	Charities	Heritage	Millennium Commission	Sport	Total ^(b)
467	Dewsbury	261	530	308	-	1,176	2,275
17	Don Valley	141	202	-	50,000	4,529	54,872
184	Doncaster Central	1,245	1,770	833	-	2,767	6,615
652	Doncaster North	1	411	24	-	41	477
489	Dover	77	661	1,237	-	162	2,136
126	Dudley North	3,204	1,370	4,361	-	1,068	10,003
528	Dudley South	570	564	13	-	635	1,782
185	Dulwich and West Norwood	426	1,078	5,068	-	36	6,608
342	Dumbarton	134	1,059	1,879	300	375	3,747
269	Dumfries	1,306	2,302	388	-	787	4,784
356	Dundee East	-	507	430	-	2,569	3,506
63	Dundee West	11,040	2,546	1,923	1,632	57	17,198
592	Dunfermline East	215	506	48	-	460	1,229
485	Dunfermline West	130	1,430	332	-	272	2,165
610	Ealing North	22	477	-	425	51	976
150	Ealing, Acton and Shepherd's Bush	2,262	2,150	2,900	-	983	8,296
284	Ealing, Southall	772	1,084	350	-	2,348	4,554
594	Easington	299	668	126	-	109	1,202
210	East Antrim	149	637	2,619	1,500	902	5,807
449	East Devon	37	310	37	-	2,044	2,428
27	East Ham	13,783	1,677	30	-	25,758	41,248
394	East Hampshire	1,450	586	251	-	836	3,123
224	East Kilbride	11	418	3,813	-	1,317	5,559
374	East Londonderry	296	1,474	380	-	1,157	3,307
539	East Lothian	267	898	388	-	100	1,653
285	East Surrey	2,035	430	17	-	2,030	4,513
460	East Worthing and Shoreham	663	1,239	-	-	415	2,317
463	East Yorkshire	572	595	71	-	1,060	2,298
479	Eastbourne	59	1,155	498	-	486	2,197
97	Eastleigh	3,180	997	424	-	7,408	12,009
444	Eastwood	20	821	-	-	1,655	2,496
65	Eccles	1	1,071	59	15,650	138	16,919
437	Eddisbury	202	988	822	-	549	2,561
12	Edinburgh Central	12,841	10,052	22,814	15,678	2,261	63,646
79	Edinburgh East & Musselburgh	1,311	3,124	8,274	-	1,807	14,515
22	Edinburgh North & Leith	9,485	10,721	21,043	7,474	483	49,207
194	Edinburgh Pentlands	943	1,393	41	3,501	432	6,311
354	Edinburgh South	123	1,467	282	-	1,664	3,537
352	Edinburgh West	71	2,221	47	-	1,262	3,601
418	Edmonton	172	760	1,809	-	-	2,741
411	Ellesmere Port and Neston	540	1,360	458	-	545	2,903
566	Elmet	136	519	100	-	667	1,422
214	Eltham	12	535	2,558	-	2,636	5,741
496	Enfield North	34	768	612	-	679	2,093
244	Enfield, Southgate	4,826	374	-	-	59	5,258
152	Epping Forest	67	640	6,517	-	888	8,112
556	Epsom and Ewell	13	840	-	-	635	1,488
562	Erewash	74	485	475	-	407	1,442
420	Erith and Thamesmead	35	1,119	83	-	1,500	2,737
464	Esher and Walton	122	499	1,105	-	568	2,294
122	Exeter	3,879	3,257	2,775	168	37	10,115
572	Falkirk East	103	751	-	-	521	1,376
521	Falkirk West	303	1,290	280	-	10	1,883
89	Falmouth and Camborne	263	1,175	11,702	-	104	13,245
495	Fareham	20	201	-	641	1,232	2,095
348	Faversham and Mid Kent	12	695	2,526	-	414	3,648
446	Feltham and Heston	104	1,443	6	-	882	2,435
144	Fermanagh and South Tyrone	1,464	2,023	1,728	1,461	2,137	8,814

Table 12

Value of Lottery Awards by Constituency and Good Cause

Cumulative total to end June 1999

£ thousands

Rank ^(a)		Arts	Charities	Heritage	Millennium Commission	Sport	Total ^(b)
470	Finchley and Golders Green	115	1,659	8	-	476	2,257
405	Folkestone and Hythe	314	1,158	901	209	376	2,959
287	Forest of Dean	160	1,076	18	-	3,249	4,503
64	Foyle	5,381	4,938	1,406	4,780	664	17,170
103	Fylde	40	581	-	-	10,851	11,472
551	Gainsborough	108	888	366	-	199	1,561
328	Galloway & Upper Nithsdale	727	1,407	286	547	964	3,931
29	Gateshead East and Washington West	38,221	809	83	-	-	39,113
612	Gedling	172	157	65	-	565	960
540	Gillingham	31	519	21	-	1,079	1,650
414	Glasgow Anniesland	587	301	27	-	1,875	2,790
543	Glasgow Baillieston	138	863	-	-	633	1,634
36	Glasgow Cathcart	62	766	-	23,000	4,770	28,598
170	Glasgow Govan	4,051	1,191	1,044	-	893	7,180
6	Glasgow Kelvin	32,627	9,247	18,513	43,907	2,200	106,494
30	Glasgow Maryhill	2,036	2,557	757	32,214	950	38,516
476	Glasgow Pollok	9	312	-	-	1,910	2,231
584	Glasgow Rutherglen	21	659	-	-	618	1,298
85	Glasgow Shettleston	1,425	2,365	4,126	-	5,961	13,876
488	Glasgow Springburn	679	583	881	-	-	2,143
57	Gloucester	727	3,559	2,751	-	11,594	18,631
319	Gordon	62	1,213	10	327	2,394	4,007
620	Gosport	103	418	370	-	-	891
434	Gower	616	548	595	-	822	2,581
76	Grantham and Stamford	69	626	166	10,635	3,485	14,981
537	Gravesham	24	455	665	-	525	1,668
477	Great Grimsby	65	1,576	362	-	222	2,225
423	Great Yarmouth	581	1,482	332	-	321	2,715
535	Greenock & Inverclyde	18	1,223	-	-	460	1,701
40	Greenwich and Woolwich	2,432	2,566	20,721	-	357	26,076
322	Guildford	1,578	591	344	-	1,477	3,989
70	Hackney North and Stoke Newington	351	2,557	27	-	13,031	15,966
34	Hackney South and Shoreditch	14,276	6,865	6,681	1,179	3,134	32,135
392	Halesowen and Rowley Regis	100	330	2,151	-	563	3,144
160	Halifax	783	1,690	4,871	-	493	7,836
569	Haltemprice and Howden	102	428	467	-	402	1,399
293	Halton	18	1,580	285	-	2,566	4,449
231	Hamilton North & Bellshill	608	352	2,797	-	1,657	5,414
586	Hamilton South	404	881	-	-	4	1,288
81	Hammersmith and Fulham	5,184	6,616	-	1,889	568	14,257
107	Hampstead and Highgate	7,111	1,440	2,646	-	40	11,236
372	Harborough	257	493	559	940	1,080	3,329
513	Harlow	20	685	567	-	656	1,927
274	Harrogate and Knaresborough	152	1,749	170	-	2,647	4,718
217	Harrow East	665	379	15	-	4,655	5,714
512	Harrow West	167	710	1,020	-	35	1,932
101	Hartlepool	645	2,662	6,628	-	1,658	11,593
459	Harwich	194	1,192	502	-	430	2,318
94	Hastings and Rye	1,625	2,769	4,116	-	3,938	12,448
468	Havant	429	986	134	-	724	2,273
655	Hayes and Harlington	-	317	31	-	60	408
473	Hazel Grove	256	884	12	-	1,092	2,245
209	Hemel Hempstead	56	724	73	-	4,956	5,808
261	Hemsworth	201	1,098	345	-	3,243	4,887
583	Hendon	33	922	107	-	237	1,300
410	Henley	43	1,020	706	-	1,152	2,920
133	Hereford	4,210	3,655	1,350	-	293	9,507
598	Hertford and Stortford	85	378	64	-	612	1,138

Table 12

Value of Lottery Awards by Constituency and Good Cause

Cumulative total to end June 1999

£ thousands

Rank ^(a)		Arts	Charities	Heritage	Millennium Commission	Sport	Total ^(b)
295	Hertsmere	136	820	159	-	3,249	4,363
177	Hexham	1,072	2,947	2,093	207	654	6,974
78	Heywood and Middleton	139	1,349	1,044	11,924	180	14,636
171	High Peak	460	530	3,898	-	2,271	7,159
240	Hitchin and Harpenden	1,446	1,671	-	-	2,172	5,289
2	Holborn and St. Pancras	60,430	21,867	30,944	45,053	91	158,385
656	Hornchurch	29	249	-	-	126	404
239	Hornsey and Wood Green	762	2,933	500	-	1,105	5,301
541	Horsham	220	711	408	-	311	1,650
581	Houghton and Washington East	54	1,048	115	-	89	1,306
163	Hove	4,506	1,981	62	-	1,126	7,674
80	Huddersfield	5,576	1,265	547	-	6,961	14,349
413	Huntingdon	136	599	805	321	938	2,798
412	Hyndburn	53	1,291	5	1,382	109	2,839
286	Ilford North	24	1,711	-	-	2,771	4,506
573	Ilford South	8	1,118	195	-	52	1,372
24	Inverness East, Nairn & Lochaber	2,150	2,313	540	41,154	1,412	47,570
241	Ipswich	775	2,745	507	370	890	5,286
113	Isle of Wight	2,465	1,839	197	2,169	3,952	10,622
88	Islington North	4,966	6,535	1,353	621	124	13,598
10	Islington South and Finsbury	21,535	25,534	5,136	11,220	4,725	68,151
517	Islwyn	587	596	215	-	507	1,905
311	Jarrow	202	673	3,215	-	105	4,196
266	Keighley	1,025	1,636	627	-	1,533	4,821
8	Kensington and Chelsea	21,226	2,725	47,381	4,033	-	75,365
360	Kettering	1,361	549	95	-	1,471	3,476
607	Kilmarnock & Loudoun	86	791	112	-	19	1,008
614	Kingston and Surbiton	40	387	184	-	336	947
623	Kingston upon Hull East	110	752	13	-	-	874
561	Kingston upon Hull North	72	1,215	12	-	150	1,449
38	Kingston upon Hull West and Hessle	741	4,325	4,336	18,476	69	27,947
596	Kingswood	360	627	140	-	55	1,181
525	Kirkcaldy	54	1,530	273	-	-	1,857
532	Knowsley North and Sefton East	405	1,036	53	-	224	1,718
633	Knowsley South	29	619	74	-	29	751
301	Lagan Valley	1,650	473	183	-	2,019	4,325
111	Lancaster and Wyre	1,879	1,146	3,601	2,365	1,756	10,746
47	Leeds Central	6,713	6,327	3,539	5,425	931	22,935
593	Leeds East	266	782	145	-	35	1,228
196	Leeds North East	3,261	2,764	221	-	13	6,258
298	Leeds North West	182	1,153	129	175	2,701	4,340
364	Leeds West	441	1,021	1,936	-	21	3,418
589	Leicester East	49	854	-	-	365	1,268
32	Leicester South	2,214	6,432	217	23,250	2,651	34,763
369	Leicester West	705	2,482	97	-	65	3,349
585	Leigh	66	729	259	-	240	1,294
161	Leominster	535	1,749	816	-	4,652	7,752
192	Lewes	525	1,902	1,722	-	2,172	6,321
429	Lewisham East	44	775	1,111	-	726	2,656
68	Lewisham West	121	1,401	10,980	-	3,802	16,304
154	Lewisham, Deptford	1,827	3,629	2,278	-	309	8,043
320	Leyton and Wanstead	142	2,232	293	-	1,330	3,996
501	Lichfield	142	1,284	597	-	26	2,049
417	Lincoln	305	1,631	348	-	468	2,752
498	Linlithgow	206	930	516	-	434	2,086
145	Liverpool, Garston	537	2,295	118	773	5,047	8,770
7	Liverpool, Riverside	16,193	13,094	32,455	31,677	7,168	100,587
272	Liverpool, Walton	23	2,664	267	-	1,798	4,752

Table 12

Value of Lottery Awards by Constituency and Good Cause

Cumulative total to end June 1999

£ thousands

Rank ^(a)		Arts	Charities	Heritage	Millennium Commission	Sport	Total ^(b)
337	Liverpool, Wavertree	135	2,501	-	-	1,173	3,809
236	Liverpool, West Derby	2	3,179	-	352	1,839	5,373
422	Livingston	214	868	218	348	1,069	2,717
69	Llanelli	303	1,780	-	13,750	261	16,094
119	Loughborough	666	792	113	-	8,601	10,172
291	Louth and Horncastle	127	719	2,118	-	1,497	4,461
146	Ludlow	1,803	1,384	3,260	-	2,320	8,766
333	Luton North	3,526	320	-	-	26	3,872
458	Luton South	279	1,813	40	-	199	2,331
428	Macclesfield	354	843	394	149	926	2,665
143	Maidenhead	5,908	753	27	-	2,144	8,832
117	Maidstone and The Weald	316	1,599	1,097	4,113	3,258	10,384
601	Makerfield	139	944	-	-	39	1,121
439	Maldon and East Chelmsford	128	812	1,056	234	314	2,543
204	Manchester, Blackley	202	2,052	3,536	-	196	5,986
3	Manchester, Central	34,847	12,181	39,683	22,004	26,869	135,582
340	Manchester, Gorton	78	1,493	-	-	2,204	3,775
359	Manchester, Withington	241	2,264	-	-	975	3,480
165	Mansfield	2,142	2,437	1,920	-	1,068	7,567
86	Medway	530	890	11,365	-	1,045	13,830
246	Meirionnydd Nant Conwy	1,356	1,433	1,553	390	496	5,230
637	Meriden	199	287	41	-	139	666
453	Merthyr Tydfil and Rhymney	444	1,329	369	-	226	2,369
616	Mid Bedfordshire	155	211	315	-	253	934
254	Mid Dorset and North Poole	125	201	1,325	-	3,423	5,073
575	Mid Norfolk	226	509	166	-	451	1,351
427	Mid Sussex	728	768	263	254	657	2,669
259	Mid Worcestershire	272	1,253	1,243	-	2,182	4,951
121	Middlesbrough	276	6,043	940	860	2,017	10,136
265	Middlesbrough South and East Cleveland	199	770	94	-	3,761	4,825
180	Midlothian	112	1,251	5,317	-	136	6,816
102	Mid-Ulster	1,315	1,347	851	5,230	2,842	11,585
43	Milton Keynes South West	20,339	1,196	-	-	3,742	25,277
576	Mitcham and Morden	20	1,241	83	-	4	1,348
331	Mole Valley	2,295	338	89	-	1,182	3,903
398	Monmouth	430	504	1,534	-	612	3,080
190	Montgomeryshire	2,006	2,204	1,134	-	1,022	6,366
466	Moray	121	1,211	568	-	382	2,283
243	Morecambe and Lunesdale	1,076	775	23	-	3,407	5,281
658	Morley and Rothwell	114	163	47	-	54	378
563	Motherwell & Wishaw	171	874	1	-	393	1,439
426	Neath	911	1,112	188	-	486	2,697
361	New Forest East	20	849	306	-	2,264	3,439
312	New Forest West	2,507	463	273	-	949	4,192
451	Newark	81	928	1,101	-	306	2,416
465	Newbury	174	680	708	-	727	2,288
60	Newcastle upon Tyne Central	4,903	5,362	1,018	-	6,715	17,998
99	Newcastle upon Tyne East and Wallsend	566	1,462	6,133	-	3,574	11,736
416	Newcastle upon Tyne North	72	1,285	1,199	-	217	2,772
504	Newcastle-under-Lyme	547	890	60	-	514	2,012
555	Newport East	263	695	-	-	532	1,490
334	Newport West	991	1,473	759	-	630	3,854
100	Newry and Armagh	4,499	2,245	2,410	-	2,470	11,624
631	Normanton	142	465	-	-	192	799
148	North Antrim	172	1,160	868	4,989	1,484	8,673
255	North Cornwall	191	1,339	2,484	-	1,041	5,055
183	North Devon	3,557	1,954	312	-	811	6,634
419	North Dorset	250	875	995	-	617	2,738

Table 12

Value of Lottery Awards by Constituency and Good Cause
Cumulative total to end June 1999

£ thousands

Rank ^(a)		Arts	Charities	Heritage	Millennium Commission	Sport	Total ^(b)
387	North Down	395	713	787	-	1,292	3,187
462	North Durham	213	1,379	8	-	698	2,298
306	North East Bedfordshire	38	490	3,460	-	310	4,299
471	North East Cambridgeshire	267	824	307	200	657	2,254
380	North East Derbyshire	117	707	164	-	2,286	3,273
157	North East Fife	3,827	539	1,285	-	2,326	7,977
481	North East Hampshire	24	295	872	-	1,000	2,191
289	North East Hertfordshire	37	905	562	-	2,986	4,490
305	North East Milton Keynes	2,866	412	-	835	186	4,299
316	North Essex	103	795	2,320	438	418	4,076
430	North Norfolk	558	797	1,097	-	182	2,635
227	North Shropshire	719	1,009	1,580	163	2,034	5,505
26	North Southwark and Bermondsey	16,079	9,401	14,744	5,145	-	45,369
93	North Swindon	20	1,116	11,225	-	126	12,487
91	North Tayside	2,277	857	9,421	-	312	12,868
365	North Thanet	667	1,037	1,569	-	126	3,399
139	North Tyneside	181	1,421	66	-	7,422	9,091
510	North Warwickshire	142	1,424	215	-	168	1,949
515	North West Cambridgeshire	173	1,065	284	-	401	1,922
355	North West Durham	953	1,958	60	-	555	3,526
350	North West Hampshire	137	890	76	-	2,516	3,619
136	North West Leicestershire	178	586	958	6,229	1,292	9,243
188	North West Norfolk	2,311	1,087	609	2,061	423	6,491
252	North Wiltshire	207	841	1,105	-	2,991	5,144
367	Northampton North	64	852	-	-	2,476	3,392
166	Northampton South	2,501	2,969	130	-	1,894	7,494
499	Northavon	118	595	80	-	1,282	2,076
497	Norwich North	1,728	257	-	-	104	2,088
9	Norwich South	2,287	5,296	16,204	31,219	14,559	69,565
174	Nottingham East	740	4,655	1,469	-	148	7,012
608	Nottingham North	9	723	-	244	12	987
25	Nottingham South	6,813	4,739	12,871	-	22,657	47,081
431	Nuneaton	116	1,384	1,067	-	24	2,592
421	Ochil	226	1,929	242	-	325	2,722
557	Ogmore	232	842	18	-	394	1,485
605	Old Bexley and Sidcup	104	596	17	-	366	1,083
441	Oldham East and Saddleworth	185	1,528	197	-	602	2,512
226	Oldham West and Royton	138	2,175	2,889	-	308	5,510
140	Orkney & Shetland	993	1,654	1,739	3,700	991	9,077
375	Orpington	59	355	1,815	-	1,076	3,305
276	Oxford East	1,011	3,538	-	-	160	4,710
52	Oxford West and Abingdon	3,538	4,205	4,599	4,751	3,349	20,441
626	Paisley North	308	446	-	-	114	868
455	Paisley South	226	1,134	1,000	-	-	2,360
435	Pendle	465	930	85	-	1,096	2,576
211	Penrith and The Border	454	1,879	1,131	226	2,115	5,806
290	Perth	394	1,522	1,212	-	1,338	4,465
104	Peterborough	394	2,427	2,375	6,055	219	11,471
370	Plymouth, Devonport	1,316	885	328	-	812	3,342
129	Plymouth, Sutton	1,487	3,298	4,683	-	411	9,879
401	Pontefract and Castleford	360	539	147	-	2,016	3,063
433	Pontypridd	405	1,708	37	-	435	2,585
173	Poole	6,244	749	29	-	81	7,104
33	Poplar and Canning Town	2,563	5,191	14,003	12,322	138	34,217
230	Portsmouth North	377	591	306	-	4,147	5,421
19	Portsmouth South	201	2,432	4,065	38,000	8,267	52,964
189	Preseli Pembrokeshire	1,352	1,081	1,718	-	2,273	6,424
55	Preston	4,127	3,556	10,192	1,640	371	19,885

Table 12

Value of Lottery Awards by Constituency and Good Cause

Cumulative total to end June 1999

£ thousands

Rank ^(a)		Arts	Charities	Heritage	Millennium Commission	Sport	Total ^(b)
108	Pudsey	38	296	-	-	10,794	11,128
457	Putney	585	715	270	-	767	2,337
634	Rayleigh	43	299	339	-	54	736
131	Reading East	240	4,195	3,977	588	797	9,797
613	Reading West	134	822	-	-	-	957
169	Redcar	57	1,101	65	-	5,988	7,211
438	Redditch	21	1,795	126	-	608	2,551
42	Regent's Park and Kensington North	11,000	8,784	1,955	2,200	1,433	25,373
648	Reigate	19	406	22	-	92	540
292	Rhondda	1,638	1,458	63	-	1,297	4,456
545	Ribble Valley	91	1,097	43	-	386	1,617
253	Richmond (Yorks)	268	1,595	1,899	224	1,099	5,085
28	Richmond Park	829	2,145	5,257	30,070	1,629	39,930
234	Rochdale	662	2,271	255	-	2,207	5,395
397	Rochford and Southend East	992	1,136	150	-	809	3,087
649	Romford	41	376	-	-	109	526
482	Romsey	525	912	12	206	529	2,184
134	Ross, Skye & Inverness West	1,794	3,172	2,391	124	1,829	9,310
493	Rossendale and Darwen	457	625	563	-	461	2,106
624	Rother Valley	92	396	-	-	384	872
50	Rotherham	244	1,190	564	18,600	538	21,137
503	Roxburgh & Berwickshire	49	1,056	25	-	886	2,016
87	Rugby and Kenilworth	140	2,840	7,449	2,500	854	13,782
635	Ruislip-Northwood	23	391	-	-	272	686
225	Runnymede and Weybridge	2,294	250	1,775	155	1,039	5,512
72	Rushcliffe	677	833	155	5,330	8,754	15,749
475	Rutland and Melton	704	503	229	-	797	2,233
277	Ryedale	601	966	902	-	2,227	4,696
406	Saffron Walden	20	1,208	993	-	735	2,955
20	Salford	41,627	2,355	8,016	-	784	52,782
313	Salisbury	2,519	799	202	-	669	4,189
135	Scarborough and Whitby	2,440	2,451	3,388	-	1,002	9,281
474	Scunthorpe	1,177	697	46	-	322	2,241
351	Sedgefield	1,022	929	27	-	1,624	3,602
335	Selby	91	2,258	619	-	884	3,852
480	Sevenoaks	161	1,597	404	-	34	2,196
13	Sheffield Central	19,361	8,574	1,216	20,910	13,214	63,273
580	Sheffield, Attercliffe	66	427	227	-	605	1,326
524	Sheffield, Brightside	16	997	-	-	862	1,875
509	Sheffield, Hallam	126	1,117	-	-	732	1,975
132	Sheffield, Heeley	77	1,099	8,385	-	128	9,689
538	Sheffield, Hillsborough	129	729	688	-	119	1,664
454	Sherwood	409	1,003	766	-	183	2,360
520	Shipley	52	1,516	315	-	4	1,887
151	Shrewsbury and Atcham	643	4,039	2,125	946	416	8,169
651	Sittingbourne and Sheppey	29	248	-	-	221	499
138	Skipton and Ripon	818	835	2,122	4,465	863	9,102
371	Sleaford and North Hykeham	313	801	172	1,584	467	3,335
447	Slough	109	1,974	-	-	349	2,432
500	Solihull	553	771	17	-	720	2,062
223	Somerton and Frome	224	1,069	3,988	-	279	5,560
519	South Antrim	95	438	355	-	1,011	1,898
110	South Cambridgeshire	197	1,138	8,193	160	1,112	10,800
505	South Derbyshire	120	766	237	-	886	2,009
518	South Dorset	98	515	482	-	805	1,900
168	South Down	267	1,033	1,182	2,719	2,208	7,410
330	South East Cambridgeshire	175	1,028	828	338	1,540	3,908
193	South East Cornwall	324	1,467	845	713	2,970	6,319

Table 12

Value of Lottery Awards by Constituency and Good Cause
Cumulative total to end June 1999

£ thousands

Rank ^(a)		Arts	Charities	Heritage	Millennium Commission	Sport	Total ^(b)
396	South Holland and The Deepings	2,057	593	75	-	371	3,096
308	South Norfolk	210	655	229	394	2,758	4,246
219	South Ribble	232	916	12	2,700	1,778	5,638
358	South Shields	179	1,734	1,029	500	49	3,492
653	South Staffordshire	30	210	108	-	112	459
368	South Suffolk	210	629	1,130	-	1,402	3,371
314	South Swindon	653	2,091	1,119	-	316	4,179
297	South Thanet	161	472	1,195	-	2,513	4,341
611	South West Bedfordshire	53	314	239	-	355	961
300	South West Devon	33	664	350	-	3,286	4,332
66	South West Hertfordshire	27	687	14,160	-	1,993	16,867
415	South West Norfolk	409	483	1,055	-	829	2,776
336	South West Surrey	646	1,298	531	330	1,010	3,814
130	Southampton, Itchen	737	2,273	3,566	-	3,233	9,809
116	Southampton, Test	1,491	789	-	-	8,204	10,483
642	Southend West	22	567	-	-	6	595
304	Southport	10	306	3,509	-	477	4,302
506	Spelthorne	19	489	-	-	1,483	1,992
407	St. Albans	57	1,029	981	-	886	2,954
469	St. Helens North	174	759	-	-	1,338	2,270
98	St. Helens South	743	975	8,773	-	1,277	11,768
179	St. Ives	1,981	1,225	1,910	-	1,714	6,830
440	Stafford	40	1,939	340	-	216	2,535
491	Staffordshire Moorlands	75	543	253	-	1,247	2,118
529	Stalybridge and Hyde	334	851	54	-	505	1,744
604	Stevenage	108	624	11	-	364	1,106
109	Stirling	3,433	2,597	3,656	-	1,345	11,031
203	Stockport	144	1,400	3,605	-	849	5,998
149	Stockton North	6,348	1,371	-	-	706	8,426
260	Stockton South	445	690	90	-	3,695	4,920
54	Stoke-on-Trent Central	16,295	3,325	275	-	284	20,178
280	Stoke-on-Trent North	795	497	1,674	1,599	77	4,642
141	Stoke-on-Trent South	9	653	1,100	-	7,151	8,913
432	Stone	20	1,052	952	221	346	2,591
587	Stourbridge	194	242	758	-	93	1,287
507	Strangford	316	685	-	-	980	1,981
378	Stratford-on-Avon	1,506	589	259	-	937	3,291
527	Strathkelvin & Bearsden	-	1,474	-	-	323	1,797
127	Streatham	289	1,832	759	6,827	284	9,990
232	Stretford and Urmston	2,102	2,697	-	-	600	5,399
137	Stroud	580	1,016	3,358	3,060	1,195	9,209
105	Suffolk Coastal	3,878	1,108	5,166	-	1,238	11,389
84	Sunderland North	7,179	2,638	3,027	-	1,057	13,901
59	Sunderland South	52	1,956	10,363	-	5,723	18,095
386	Surrey Heath	886	315	8	-	2,000	3,210
595	Sutton and Cheam	19	1,163	-	-	9	1,191
484	Sutton Coldfield	167	541	-	-	1,463	2,171
590	Swansea East	343	413	63	-	444	1,263
191	Swansea West	1,020	3,480	568	661	634	6,363
582	Tamworth	82	596	40	-	582	1,301
550	Tatton	59	305	822	-	385	1,571
162	Taunton	3,526	1,212	1,408	-	1,560	7,706
445	Teignbridge	487	1,317	96	-	587	2,486
270	Telford	573	1,990	656	-	1,556	4,775
544	Tewkesbury	34	334	245	-	1,016	1,627
310	The Wrekin	1,049	1,200	1,642	-	327	4,217
630	Thurrock	10	681	89	-	23	803
262	Tiverton and Honiton	330	1,407	674	-	2,453	4,864

Table 12

Value of Lottery Awards by Constituency and Good Cause

Cumulative total to end June 1999

£ thousands

Rank ^(a)		Arts	Charities	Heritage	Millennium Commission	Sport	Total ^(b)
399	Tonbridge and Malling	161	1,363	1,139	-	411	3,074
221	Tooting	1,092	1,875	-	2,289	373	5,629
643	Torbay	21	331	131	-	106	588
302	Torfaen	590	1,300	349	-	2,084	4,324
95	Torridge and West Devon	1,300	2,397	3,049	-	5,641	12,387
172	Totnes	2,043	982	1,010	-	3,118	7,153
229	Tottenham	646	3,702	727	-	385	5,461
23	Truro and St. Austell	3,110	1,954	1,730	39,150	2,423	48,368
343	Tunbridge Wells	758	916	418	242	1,412	3,747
552	Tweeddale, Ettrick & Lauderdale	176	724	200	-	448	1,547
321	Twickenham	2,336	360	1,047	-	254	3,996
16	Tyne Bridge	8,874	7,207	409	38,841	675	56,005
176	Tynemouth	345	2,846	584	-	3,224	6,999
654	Upminster	-	278	-	-	134	412
247	Upper Bann	1,110	1,804	14	738	1,561	5,228
570	Uxbridge	7	1,384	-	-	-	1,391
327	Vale of Clwyd	1,434	2,208	216	-	82	3,940
201	Vale of Glamorgan	829	608	3,737	147	857	6,177
347	Vale of York	152	633	1,132	182	1,570	3,669
18	Vauxhall	39,614	12,598	1,504	265	-	53,981
114	Wakefield	2,712	1,504	5,538	-	842	10,597
553	Wallasey	22	1,345	134	-	45	1,545
638	Walsall North	63	566	26	-	-	656
45	Walsall South	15,889	1,395	1,568	-	5,210	24,061
222	Walthamstow	182	1,246	318	-	3,869	5,615
391	Wansbeck	167	2,567	196	-	215	3,145
309	Wansdyke	1,450	768	1,308	-	706	4,233
186	Wantage	446	996	598	3,046	1,469	6,556
404	Warley	190	1,490	-	1,245	37	2,962
382	Warrington North	49	1,132	100	-	1,958	3,238
256	Warrington South	2,490	786	258	-	1,516	5,050
147	Warwick and Leamington	2,683	3,633	357	-	2,051	8,724
323	Watford	41	2,049	48	-	1,833	3,972
362	Waveney	121	1,607	434	-	1,271	3,433
395	Wealden	502	535	425	-	1,646	3,108
478	Weaver Vale	116	1,509	98	-	493	2,216
508	Wellingborough	109	1,516	40	-	312	1,977
181	Wells	990	808	1,303	-	3,632	6,733
609	Welwyn Hatfield	59	669	144	-	111	983
640	Wentworth	43	421	24	-	120	607
92	West Aberdeenshire & Kincardine	638	545	10,794	-	806	12,783
281	West Bromwich East	2,503	2,020	71	-	20	4,614
199	West Bromwich West	74	1,799	848	-	3,469	6,190
574	West Chelmsford	350	911	36	-	70	1,367
215	West Derbyshire	301	1,904	766	756	2,004	5,731
206	West Dorset	702	1,423	2,389	-	1,399	5,912
125	West Ham	387	5,804	101	1,038	2,710	10,041
384	West Lancashire	104	1,038	-	-	2,081	3,223
531	West Renfrewshire	77	1,189	35	-	419	1,720
390	West Suffolk	194	559	1,482	566	362	3,163
213	West Tyrone	161	2,071	1,040	350	2,129	5,751
82	West Worcestershire	5,232	1,077	6,833	-	1,033	14,175
282	Westbury	2,630	1,220	528	-	224	4,602
248	Western Isles	888	1,643	1,163	203	1,322	5,219
124	Westmorland and Lonsdale	3,995	2,506	2,965	-	580	10,047
315	Weston-Super-Mare	81	1,995	839	-	1,262	4,176
106	Wigan	59	2,083	361	-	8,850	11,352
278	Wimbledon	2,310	752	1,605	-	25	4,692

Table 12

Value of Lottery Awards by Constituency and Good Cause
Cumulative total to end June 1999

£ thousands

Rank ^(a)		Arts	Charities	Heritage	Millennium Commission	Sport	Total ^(b)
48	Winchester	4,537	2,022	7,286	5,138	2,739	21,722
198	Windsor	1,106	630	234	-	4,231	6,201
636	Wirral South	103	578	-	-	-	681
650	Wirral West	21	347	-	-	156	524
202	Witney	857	1,734	2,086	-	1,467	6,144
195	Woking	136	777	3,189	-	2,169	6,270
628	Wokingham	69	410	135	-	220	834
591	Wolverhampton North East	17	1,163	51	-	-	1,231
558	Wolverhampton South East	147	977	234	-	124	1,481
53	Wolverhampton South West	11,700	2,580	1,615	-	4,387	20,281
288	Woodspring	125	644	1,596	-	2,130	4,494
220	Worcester	1,149	2,836	1,316	-	330	5,631
123	Workington	4,844	1,937	575	-	2,742	10,098
490	Worsley	33	401	1,641	-	59	2,133
617	Worthing West	74	529	53	-	263	919
197	Wrexham	451	1,824	799	-	3,164	6,238
452	Wycombe	196	1,872	-	-	313	2,382
366	Wyre Forest	175	907	445	-	1,869	3,397
526	Wythenshawe and Sale East	116	1,281	130	-	310	1,837
324	Yeovil	503	841	851	-	1,759	3,954
307	Ynys Mon	1,092	1,626	808	-	759	4,286
	Constituency average	1,933	1,638	1,855	2,577	1,618	9,925

Notes: (a) Ranked from highest to lowest on basis of number of awards allocated to bodies in the constituency
(b) £200 million to NESTA

Sources: *Department of Culture, Media and Sport (Awards Database)*

III Ticket sales

Chart 1 shows National Lottery ticket sales from each week from the first draw on 19 November 1994 to the week ending 26 June 1999.

Saturday draw

- Excluding rollover weeks, sales for the Saturday draw averaged around £60 million for the first few months. This rose to an average of around £70 million by the end of 1995. The average remained between £68 million and £70 million for the whole of 1996.
- Following the introduction of the Wednesday draw in February 1997, sales dropped back to an average of around £60 million per week and average around £55 million per week for 1999.

Wednesday draw

- Sales for the Wednesday draws currently average around £27 million per week and have been around this level since its introduction.

Scratchcards

- Scratchcard sales averaged around £40 million per week for the first few weeks after their introduction in March 1995. Sales declined steadily to around £20 million per week by March 1996 and average around £11½ million for 1999.

Total sales

- Overall sales, including scratchcards, were around £87 million per week prior to the introduction of the Wednesday draw. They rose to an average of around £103 million in 1997 but have fallen to around £95 million for 1999.
- Total sales over Camelot's seven-year licence period were originally projected at around £32 billion. In all but the last financial year of its operation, lottery ticket sales have exceeded the projection. (Table 1).

Table 1

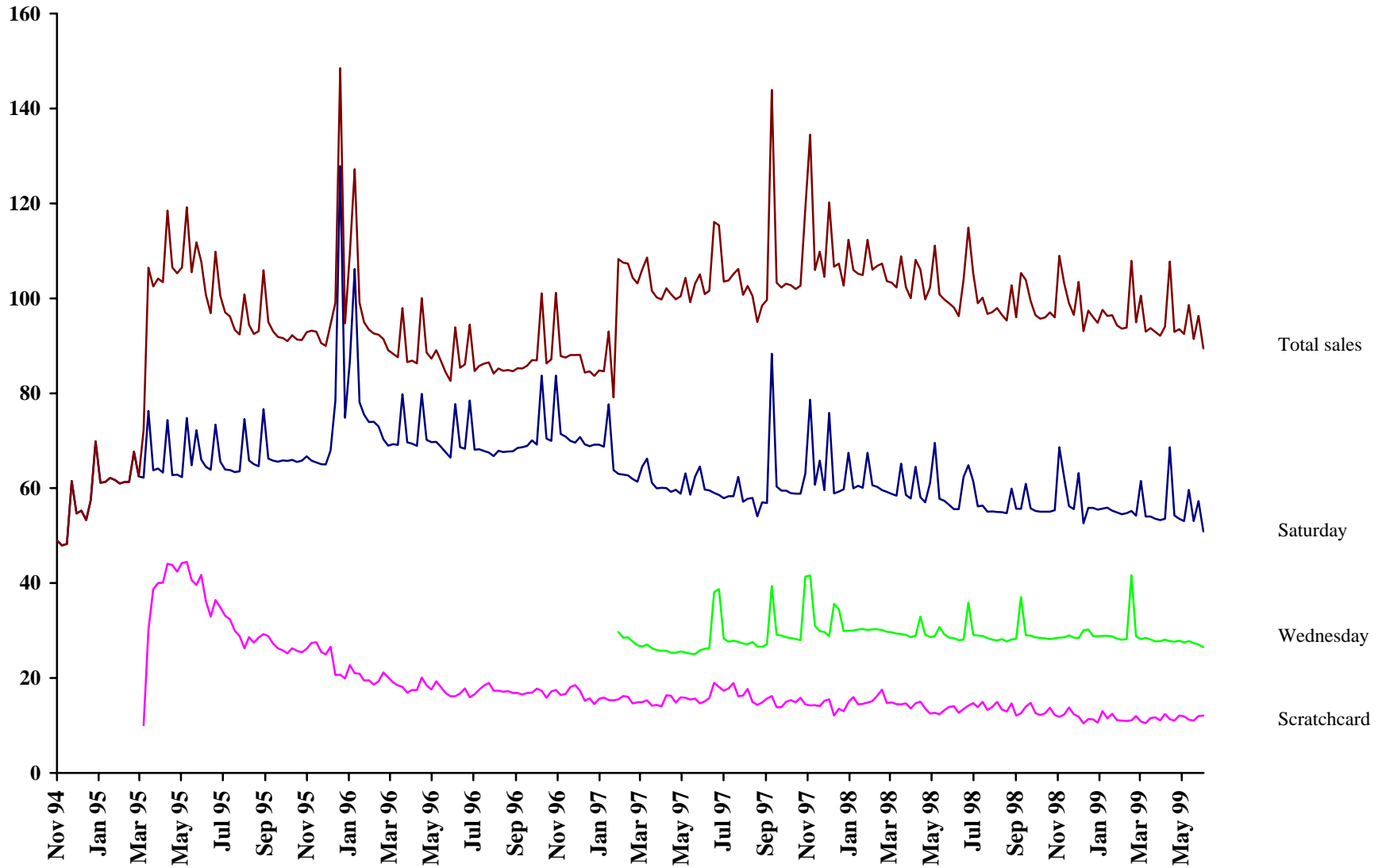
Actual and Forecast Ticket Sales

	Gross Sales		Lottery Duty @12%		Ticket Sales Payment			
	Forecast	Actual	Forecast	Actual	Forecast		Actual	
					£ million	Per cent	£ million	Per cent
1994/95	850	1,191	102	143	220	25.9%	317	26.6%
1995/96	2,950	5,217	354	626	719	24.4%	1,416	27.1%
1996/97	4,160	4,723	499	567	1,099	26.4%	1,273	26.9%
1997/98	5,075	5,514	609	662	1,432	28.2%	1,567	28.4%
1998/99	5,212	5,207	625	625	1,497	28.7%	1,487	28.6%
1999/00	5,350	..	642	..	1,522	28.5%
2000/01	5,485	..	658	..	1,565	28.5%
2001/02	2,810	..	337	..	806	28.7%
Total	31,892	..	3,827	..	8,860	27.8%

Sources: *Payments to the National Lottery Distribution Fund, National Audit Office, HC 678 1995-96*
Camelot Annual Report and Accounts

National Lottery weekly ticket sales

£ million



Addresses of distributing bodies

Arts

Arts Council of England
14 Great Peter Street
London SW1P 3NQ
0171-333 0100

Arts Council of Wales
Holst House
9 Museum Place
Cardiff CF1 3NX
01222 376500

Scottish Arts Council
12 Manor Place
Edinburgh EH3 7DD
0131-226 6051

Arts Council of Northern Ireland
MacNeice House
77 Malone Road
Belfast BT9 6AQ
01232 667000

Sport

UK Sports Council (UK Sport)
Walkden House
10 Melton Street
London NW1 2EB
0171-380 8000

English Sports Council (Sport England)
16 Upper Woburn Place
London WC1H 0QP
0171-273 1500

Sports Council for Wales
South East Regional Office
Sophia Gardens
Cardiff CF1 9SW
01222 300500

Scottish Sports Council
Caledonia House
South Gyle
Edinburgh EH12 9DQ
0131-339 9000

Sports Council of Northern Ireland
House of Sport
Upper Malone Road
Belfast BT9 5LA
01232 382222

Heritage

Heritage Lottery Fund
7 Holbein Place
London SW1W 8NR
0171-591 6000

Millennium

Millennium Commission
Portland House
Stag Place
London SW1E 5EZ
0171-880 2030

Charities

National Lottery Charities Board
St Vincent House
16 Suffolk Street
London SW1Y 4NL
0171-747 5299

New Opportunities

New Opportunities Fund
Dacre House
19 Dacre Street
London SW1 0DH
0171-222 3084

National Lottery – facts and figures

Players

Around 30 million people play the National Lottery regularly, which is about 70% of the eligible adult population. The average spend, including the midweek draw is £3.15 a week. About 30% of players are members of a syndicate.¹⁹

Chances of winning

The chances of winning the Jackpot (i.e. matching all six balls) is approximately 1 in 14 million. The table below sets out the probability of winning all the different prizes. The odds of winning *any* prize is the sum of these probabilities – 1 in 54.

Chances of winning the National Lottery

	Odds	Typical Prize
Six numbers - the Jackpot	1 in 14 million	£2 million
Five numbers plus the Bonus number	1 in 2.3 million	£100,000
Five numbers	1 in 55,500	£1,500
Four numbers	1 in 1,030	£65
Three numbers	1 in 57	£10

Source: www.lottery.merseyworld.com

Winners

As at the 22 June 1999 there had been 352 million winning tickets. This means that there are about 1 million winners every week. There have been 1,420 Jackpot Tickets and over 800 people have become millionaires. The average size of the Jackpot Ticket is £2 million and as many people are in syndicates the average amount of prize money going to Jackpot winners is £590,000.

Number Frequency

Each numbered ball has the same chance as any other of being chosen by the machine. However, due to random variation over the 371 lottery draws the spread of numbers drawn is unlikely to be evenly distributed. The attached chart two show the frequency distribution of the lottery balls in numerical order.²⁰ Number 25 has been drawn the most as a main ball – 60 times compared to numbers 19 and 39 which have only been drawn 32 times. Chart three shows the frequency distribution of the balls drawn. From the chart, 6 balls have been drawn 45 times, whilst no ball has been drawn 33 times.

¹⁹ www.national-lottery.co.uk (Official National Lottery Website)

²⁰ The Lottery draw on 14 July was draw number 371, www.national-lottery.co.uk/game/sortpop.html

**Chart 2 - Frequency of Lottery Numbers - in numerical order
(out of possible 371)**

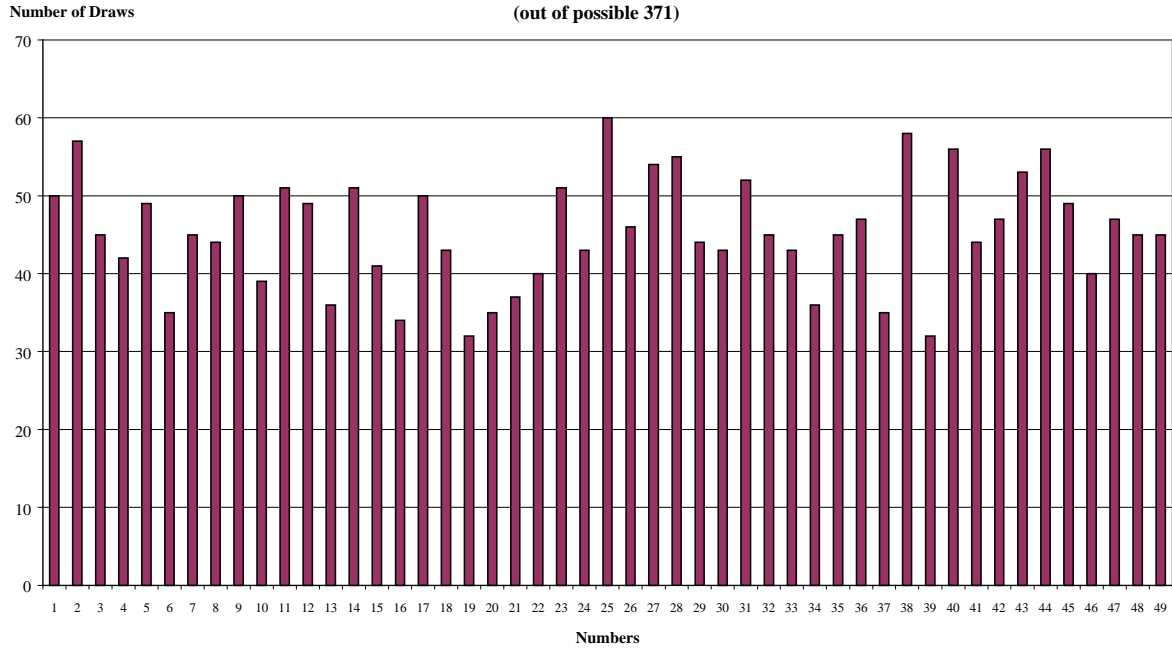


Chart 3 - Frequency distribution of Lottery Balls

